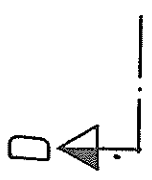
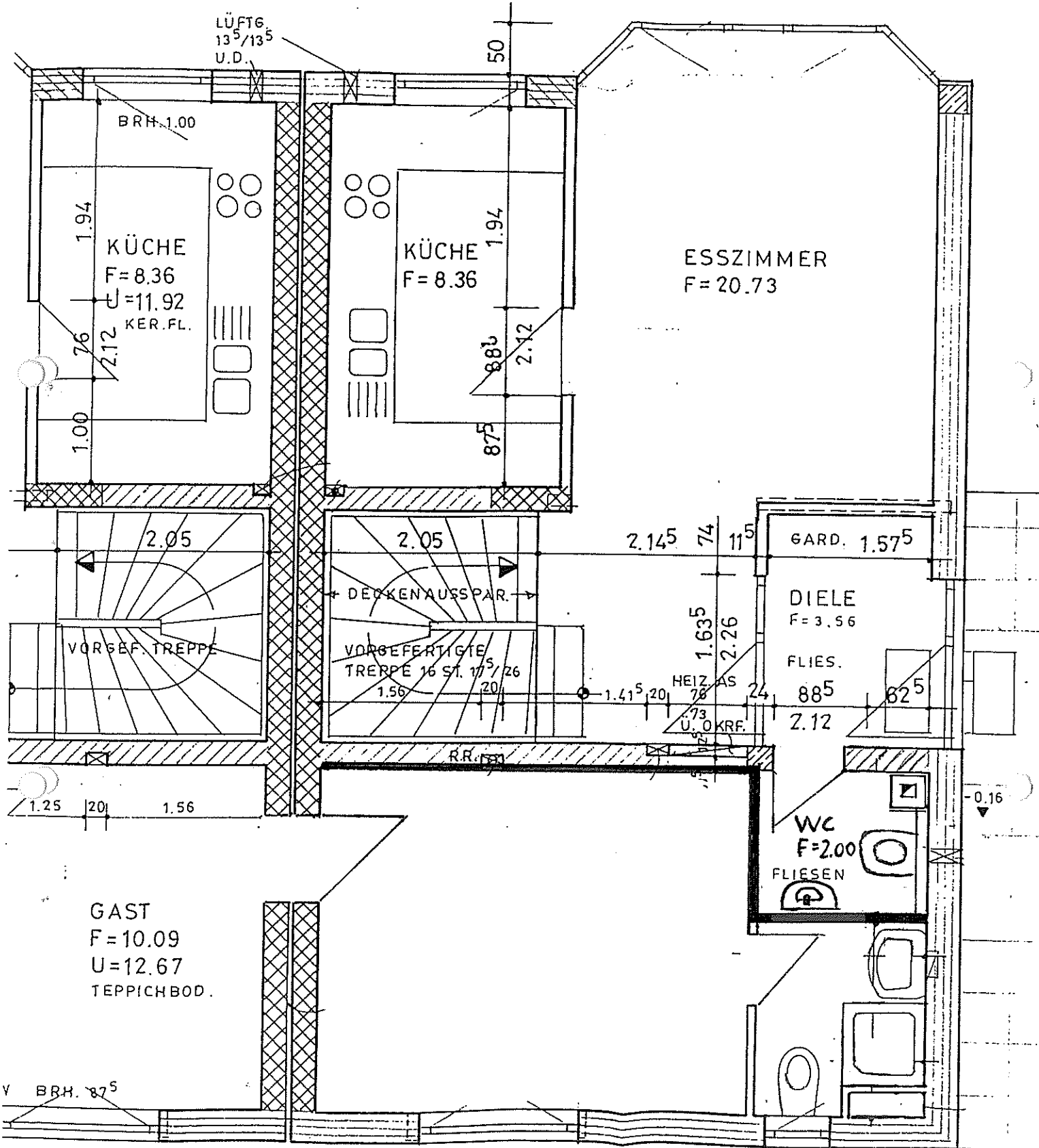
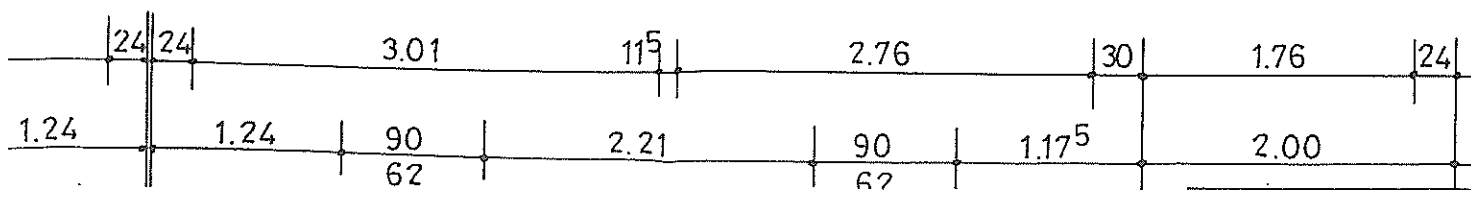
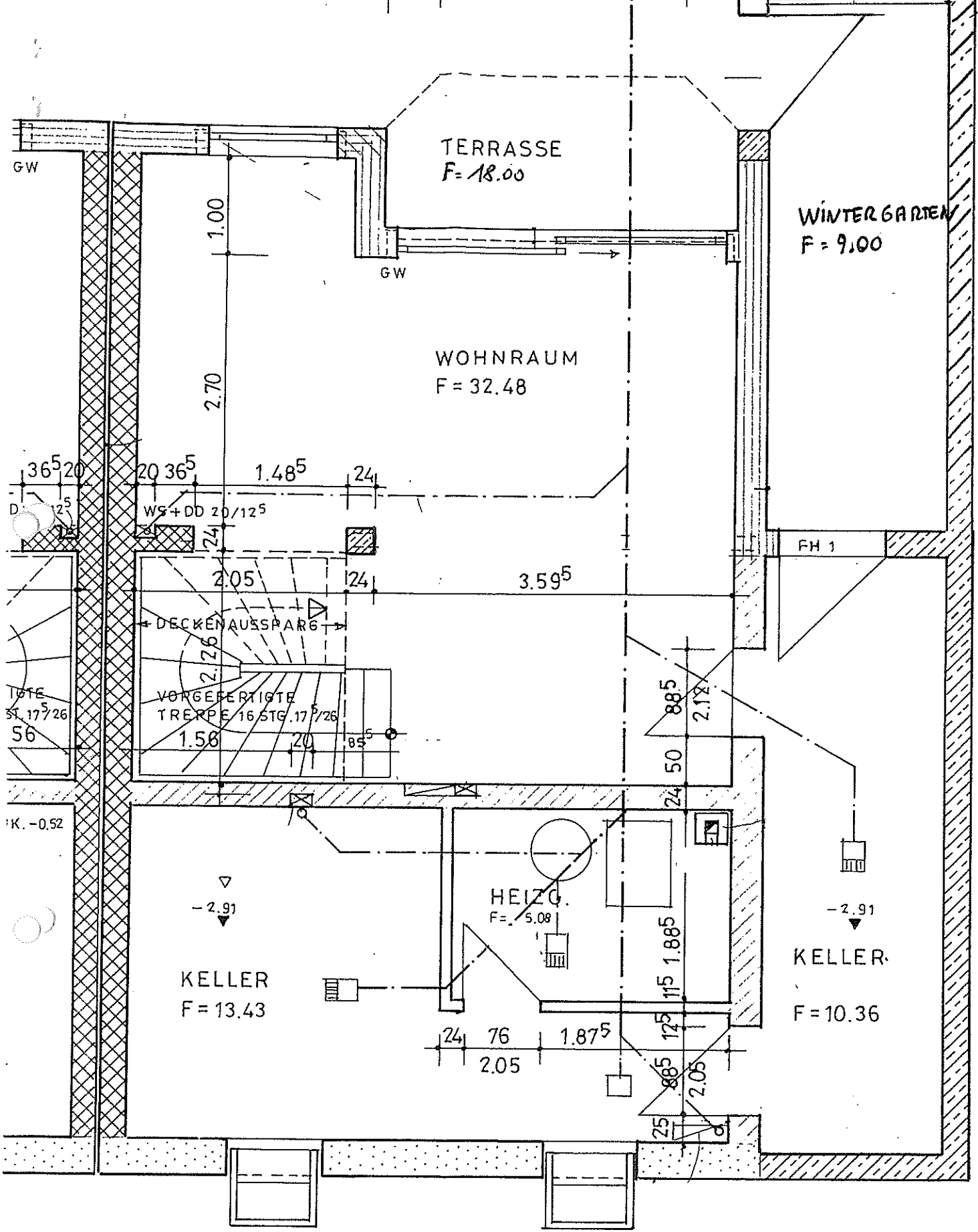


LÜFTG.
135/135
U.D.





Walluf Hauptstraße 7g	
Wohnflächenberechnung	
Wohnzimmer	32,48
Esszimmer	20,73
Küche	8,36
Diele	3,56
Gäste-WC	2,00
Schlafzimmer	12,99
Kind 1	8,36
Kind 2	11,67
Bad	7,40
Flur	8,67
Terrasse 50%	9,00
Wohnfläche	125,22
Keller 1	13,43
Keller 2	10,36
Heizraum	5,08
Wintergarten	9,00
Nutzfläche	37,87