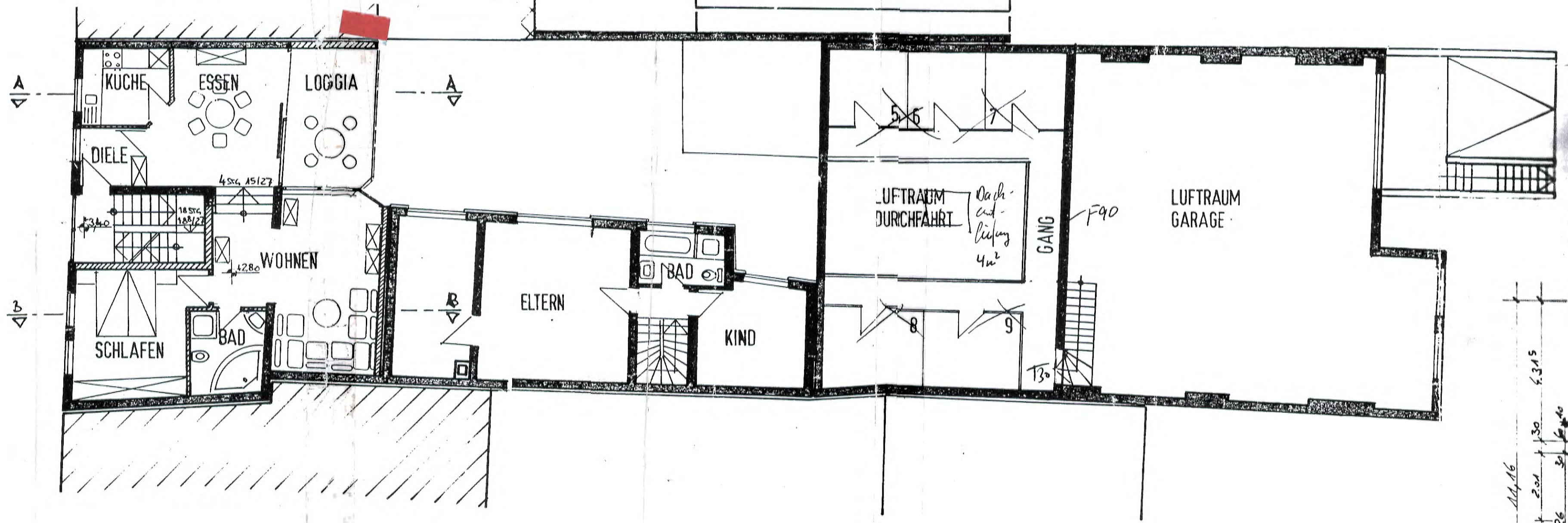


24 2.63^s 10 3.59^s 8 ~2.50



3
 11.16
 24 3.99^s 24 2.07^s 1.65 10 2.38^s 24
 35 24 2.51 10 2.26^s 81
 85 24 ~5.58^s 8
 4.13^s 24

20 24 3.88^s 24 1.88^s 24 3.28^s 17^s
 24 3.63^s 10 2.13^s 24 3.26 17^s 20
 6.35 ~3.43^s 20

1. OBERGESCHOSS

11.16
 19.85 30 2.01 24 2.01 30 4.31^s
 30 4.26 40

45 9.15 35
 5.00 4.15 ~9.65 12 4.00^s 7.69 9.50
 3.88^s 25 3.65 35 3.19 25 9.26 24 5.00 25