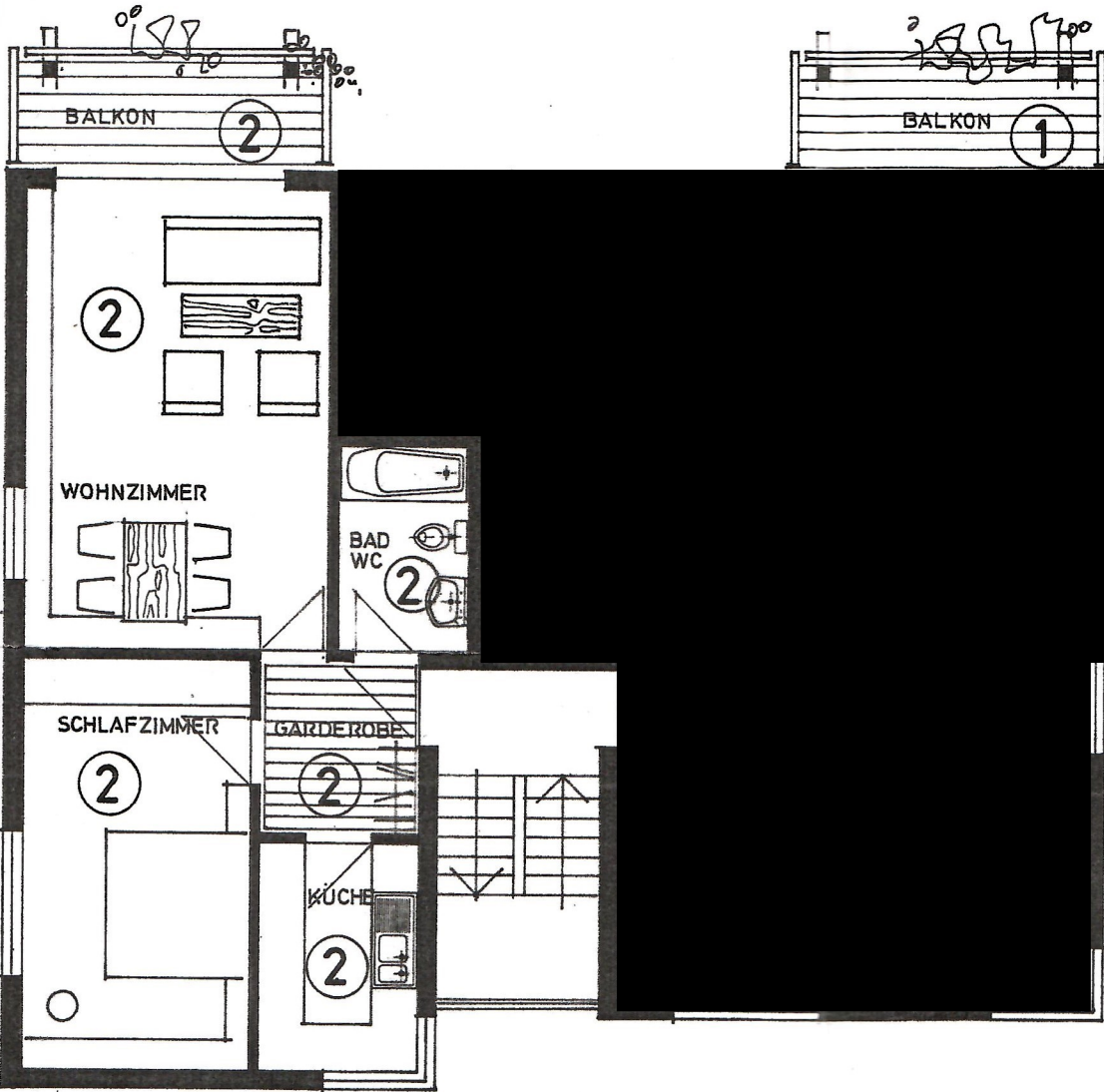


24	4.01	11.5	1.76	24	2.26	11.5	1.635	11.5	24	
24	4.01	24	5.885					11.5	4.01	24



								1.58
				24				
					5.01			
						11.5		3.135
							1.01	
							1.76	
				11.5				
					2.385			
				11.5				
							1.26	
					3.01			
							1.15	
							3.01	
								11.115
								1.00

24	3.01	11.5	2.135	24	2.135	24	4.01	11.5	2.26	24
5.74				9.00						