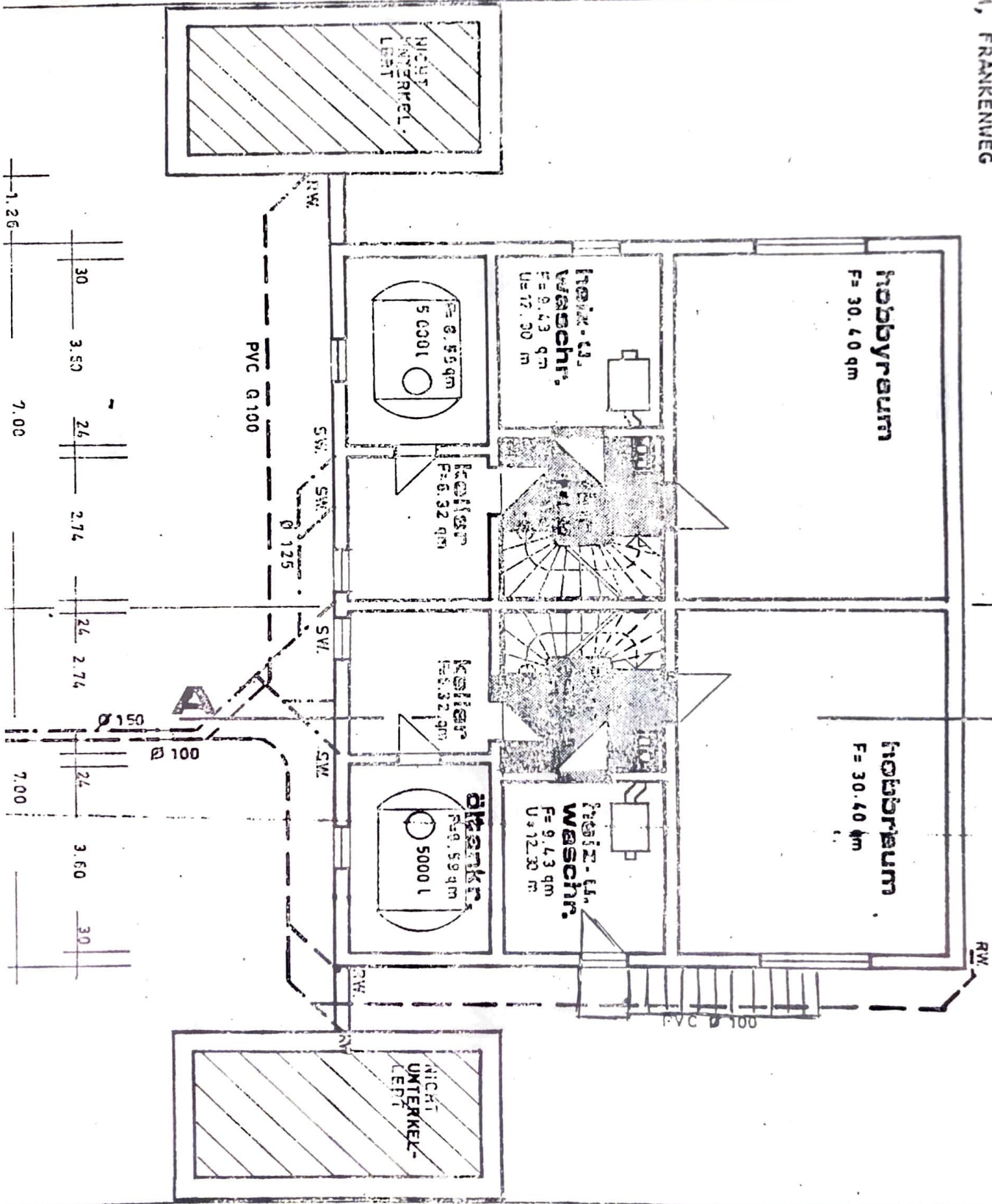


BAUVORHABEN :

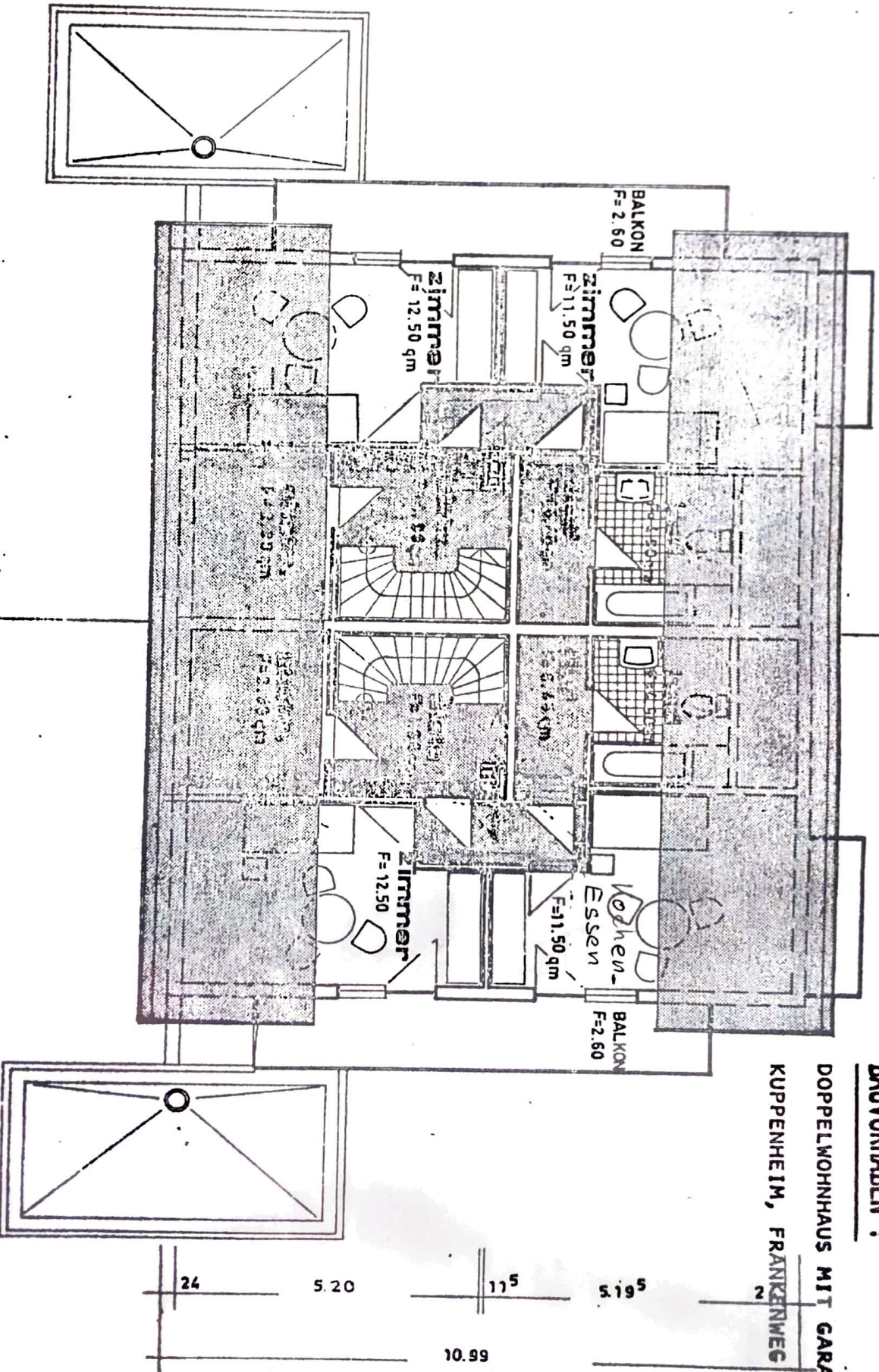
DOPPELWOHNHAUS MIT GARAGEN  
KUPPENHEIM, FRANKENWEG

30 2.385 24 2.91 24 4.62 30



**BAUVORHABEN :**

**DOPELWOHNHAUS MIT GARAGEN  
KUPPENHEIM, FRANKENWEG**



**DE.**

24 2.50

175

7.185

24 75

24

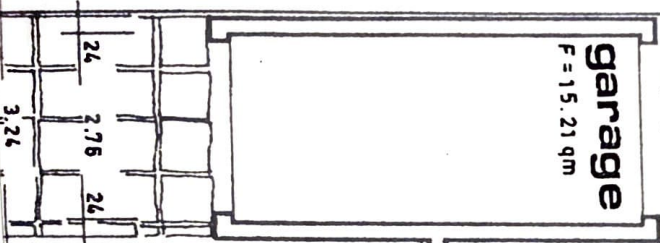
5.51

24

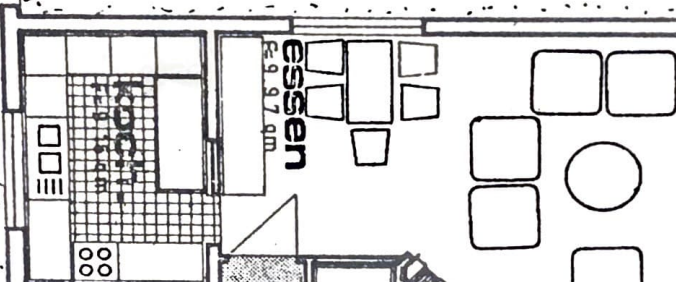
BAUVORHABEN :

DOPPELWOHNHAUS MIT GARAGEN  
KUPPENHEIM, FRANKENWEG

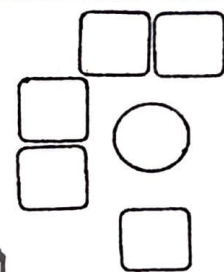
garage  
F = 15.21 qm



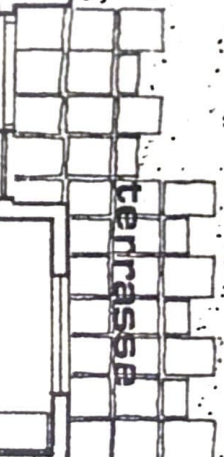
essen  
F = 9.97 qm



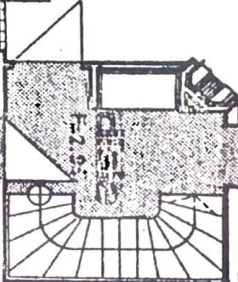
wohnen  
F = 28.76 qm



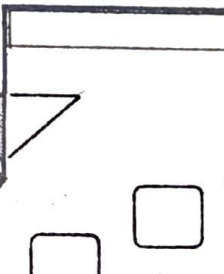
terrasse



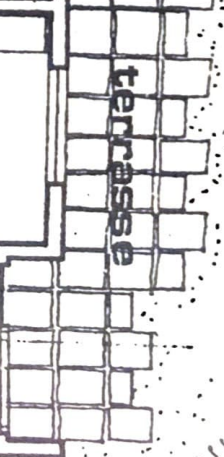
F = 2.81



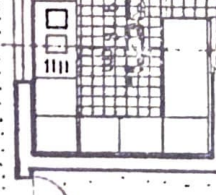
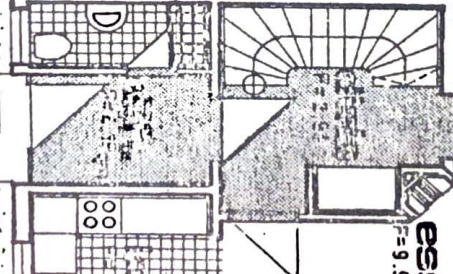
wohnen  
F = 28.76 qm



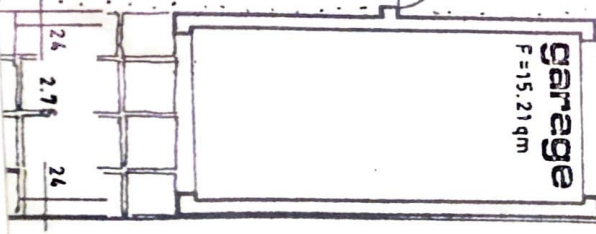
terrasse



essen  
F = 9.97 qm



garage  
F = 15.21 qm



24 3.425

115

3.10

24

115

3.425

24

**BAUVORHABEN !**

**DOPPELWOHNHAUS MIT GARAGEN  
KUPPENHEIM, FRANKENWEG**

