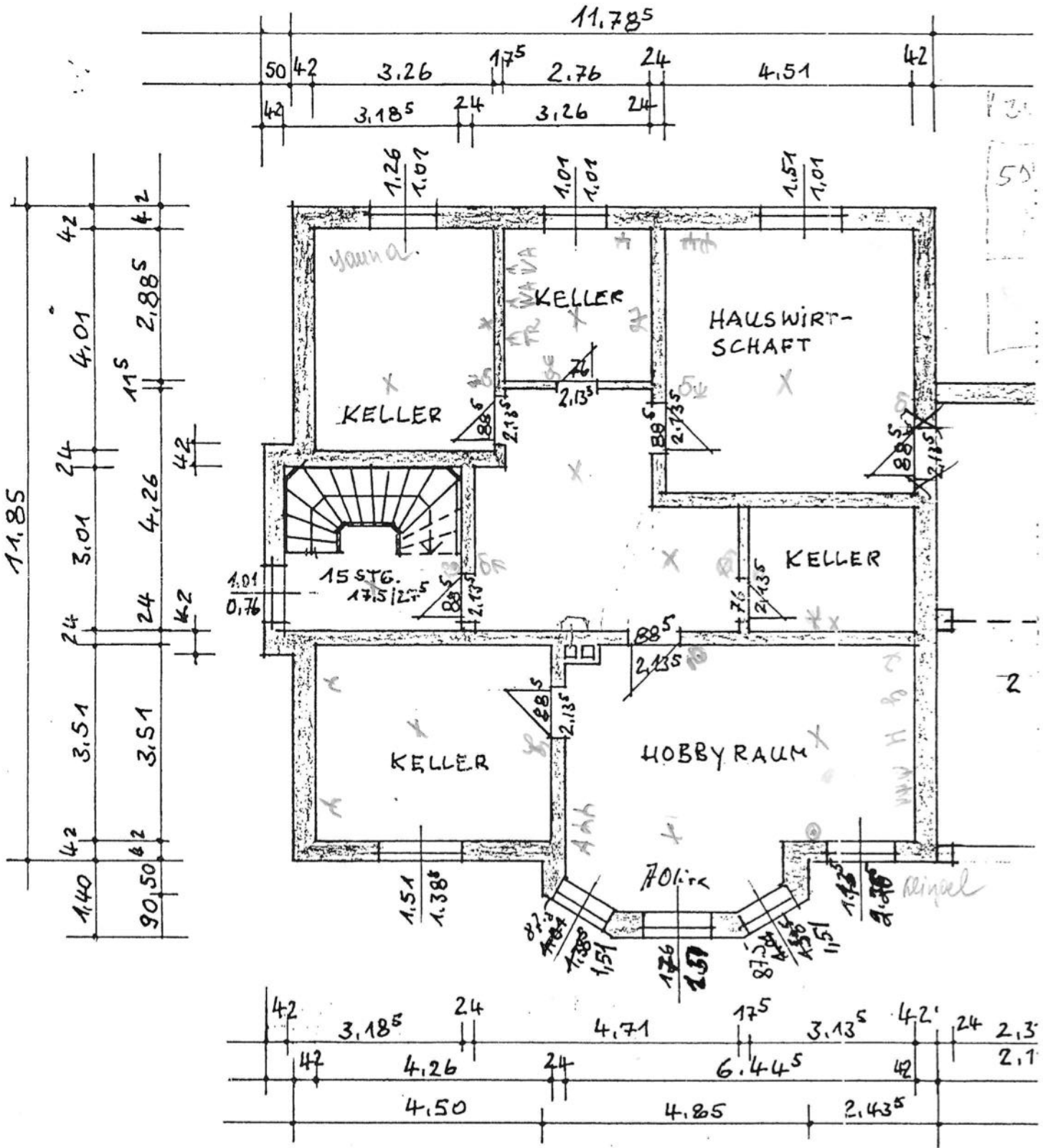


NORD



KELLERGESSCHOSS

GRENZE

GRENZE

21.00

3.69

11.78<sup>5</sup>

5.525

3.19

50

42

3.26

17<sup>5</sup>

2.76

24

4.51

42

5.52<sup>5</sup>

42

3.18<sup>5</sup>

24

3.26

24

42

4.01

24

3.01

24

3.51

42

90

50

42

4.26

42

24

4.85

6.44<sup>5</sup>

42

4.50

4.85

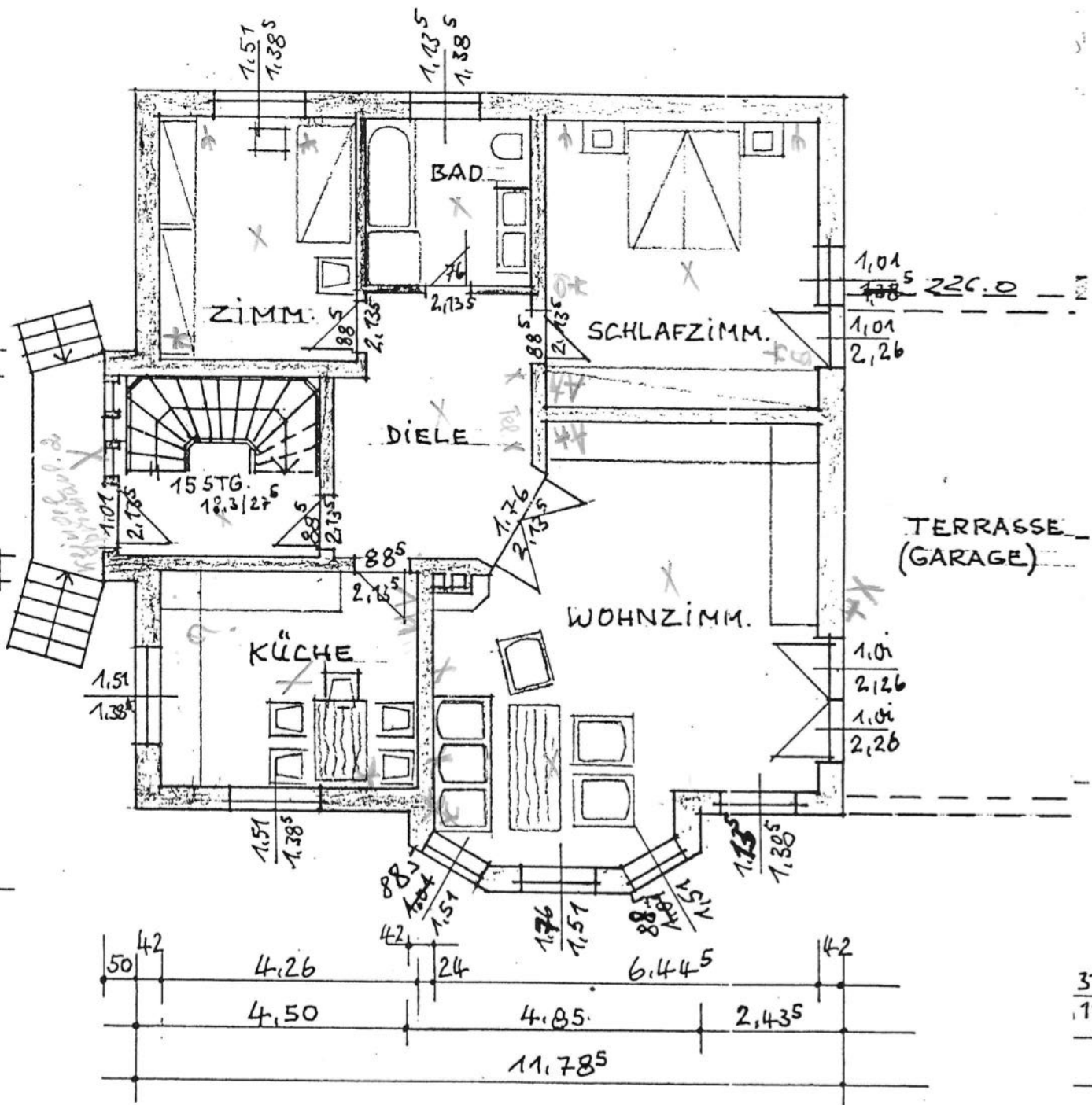
2.43<sup>5</sup>

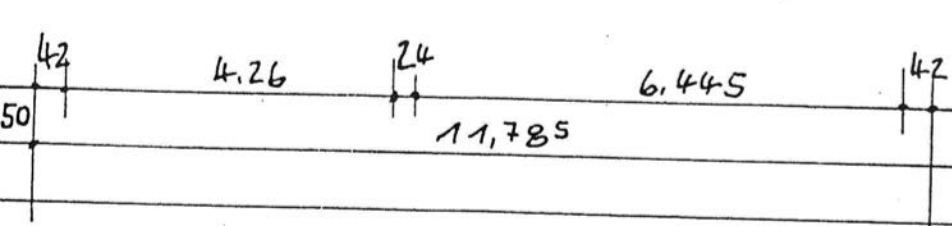
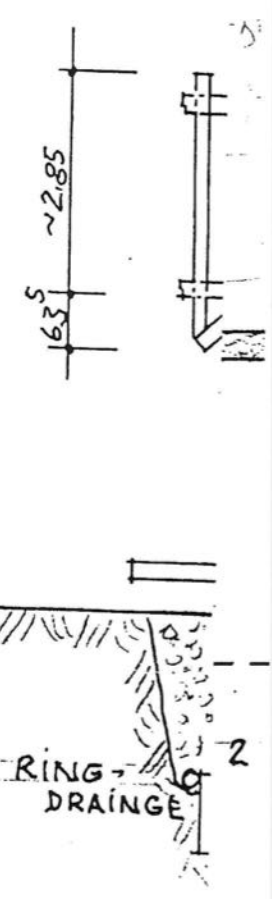
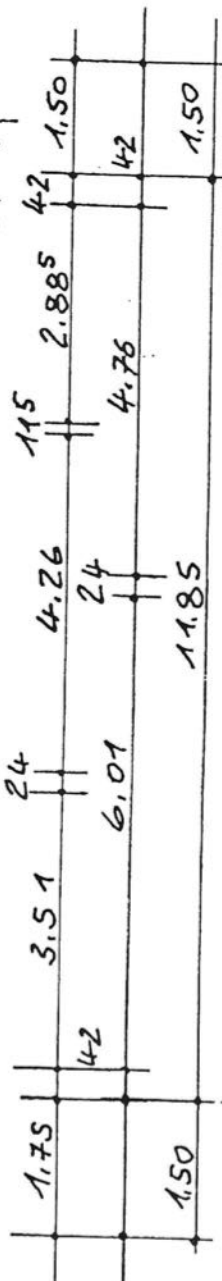
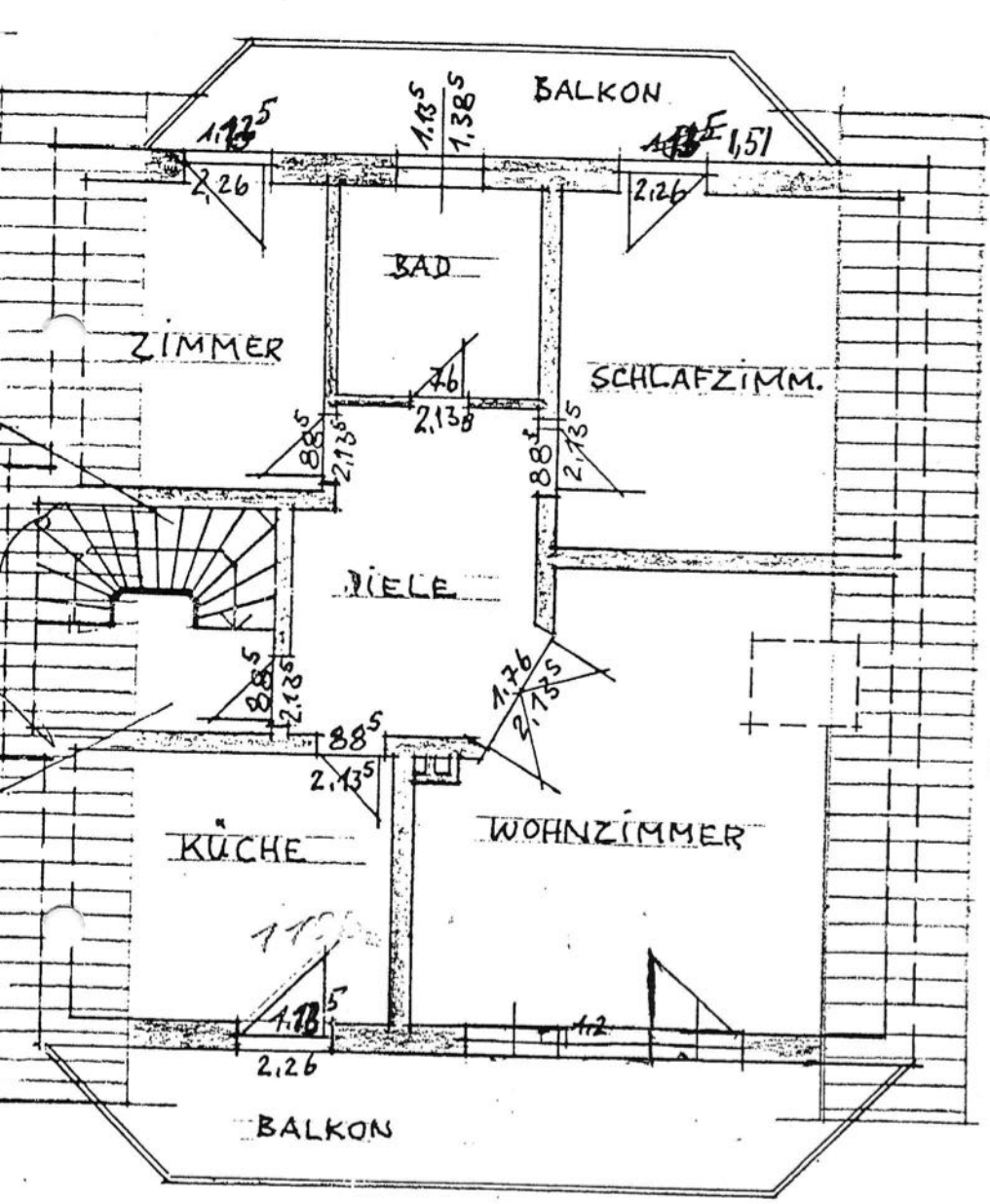
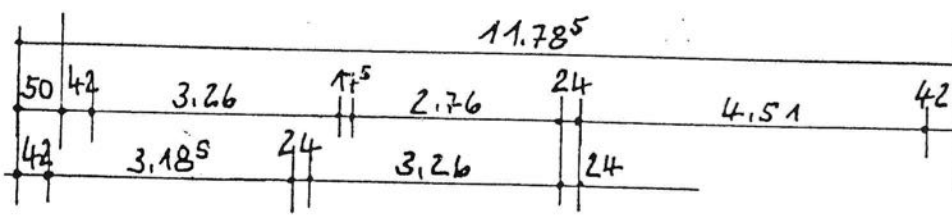
11.78<sup>5</sup>

3  
1

ERDGESCHOSS

GREN:  
STRAS:





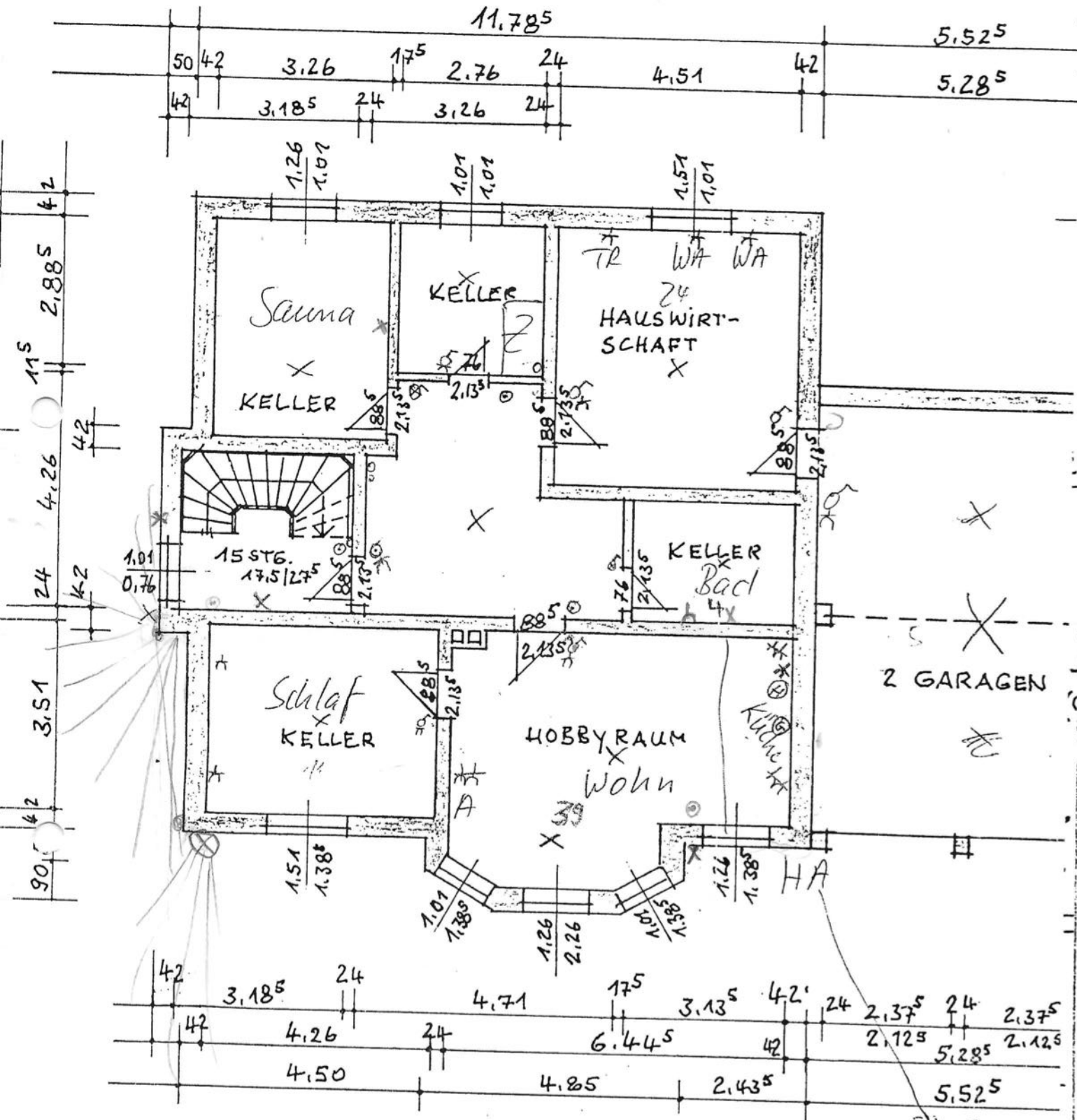
DACHGESCHOSS

Schalenmaß =  $\mu$ maß  
 - 23 cm = Schichtenmaß

SC

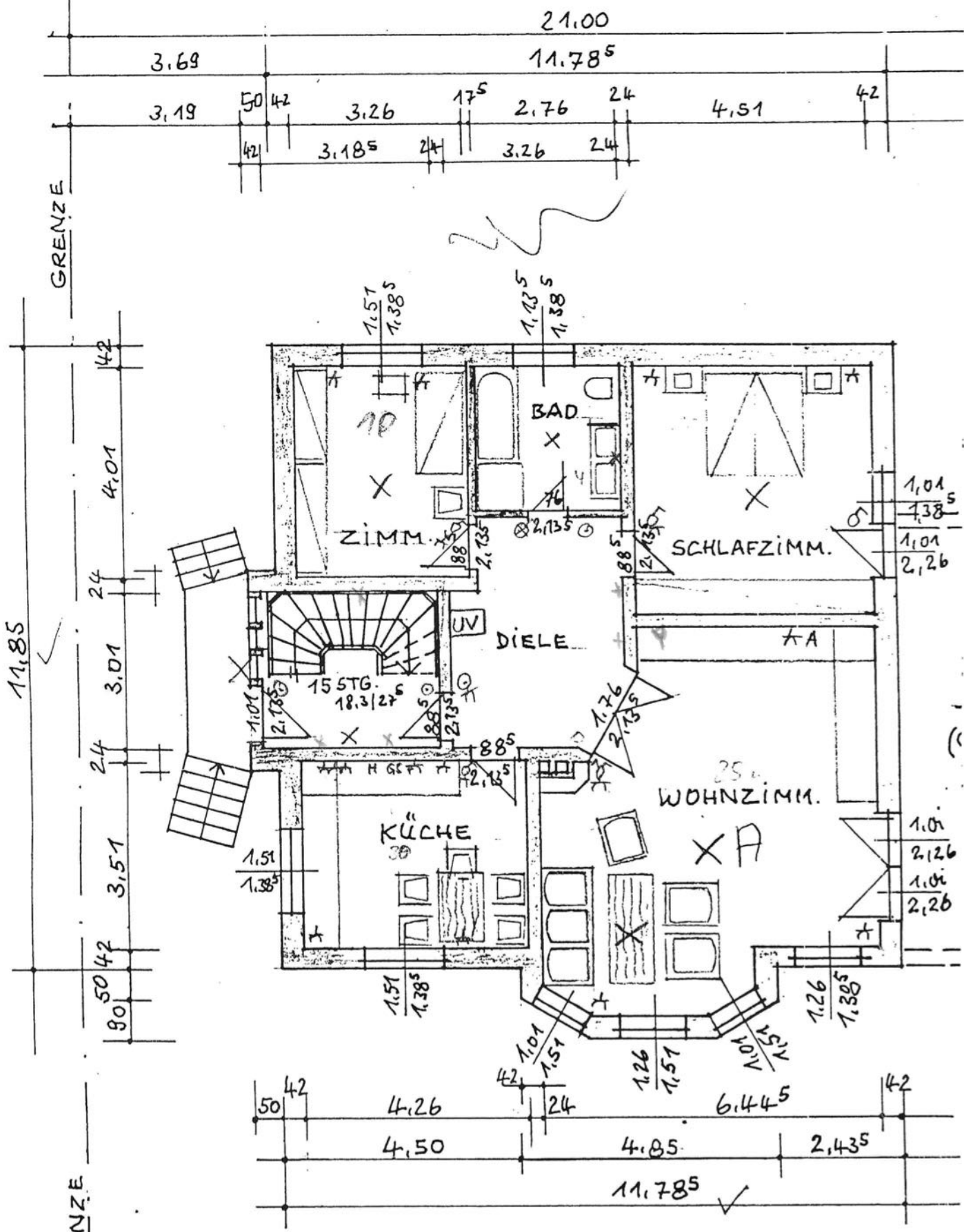
2.3  
2.1

NORD 



KELLERGEESCHLOSS

- ★ = Steckdose
- ♂ = Schalter
- X = Leuchtenauslaß



GRENZE

GRENZE

ERDGESCHOSS

21.00

11.78<sup>5</sup>

3.69

3.19

50

42

3.26

3.18<sup>5</sup>

17<sup>5</sup>

2.76

3.26

24

4.51

42

11.85

42

4.01

24

3.01

24

3.51

50

42

90

50

42

4.26

4.50

42

24

4.85

4.85

6.44<sup>5</sup>

2.43<sup>5</sup>

11.78<sup>5</sup>

1.01

1.38<sup>5</sup>

1.01

2.26

1.01

2.26

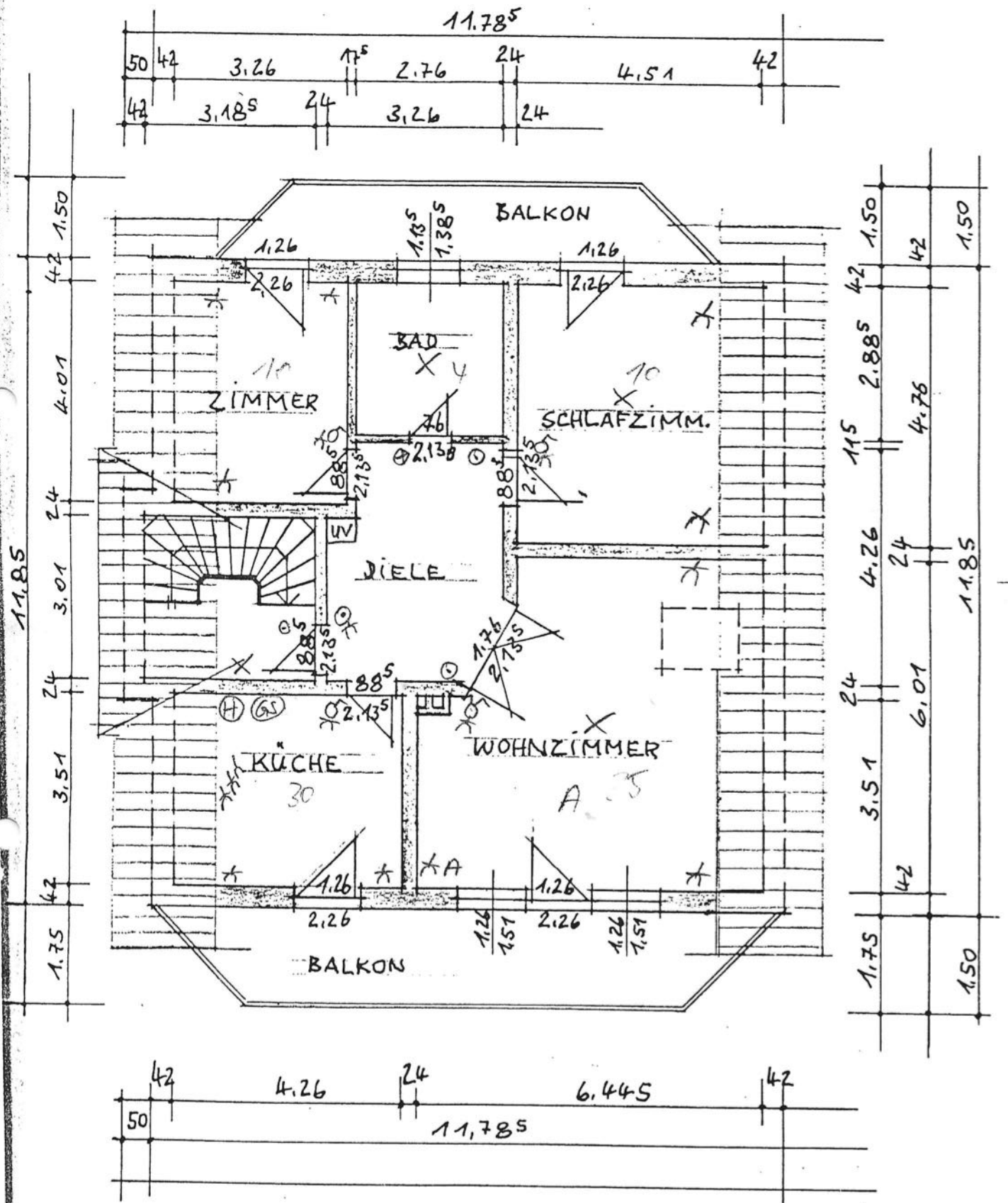
1.01

2.26

1.26

1.38<sup>5</sup>

42



DACHGESCHOSS