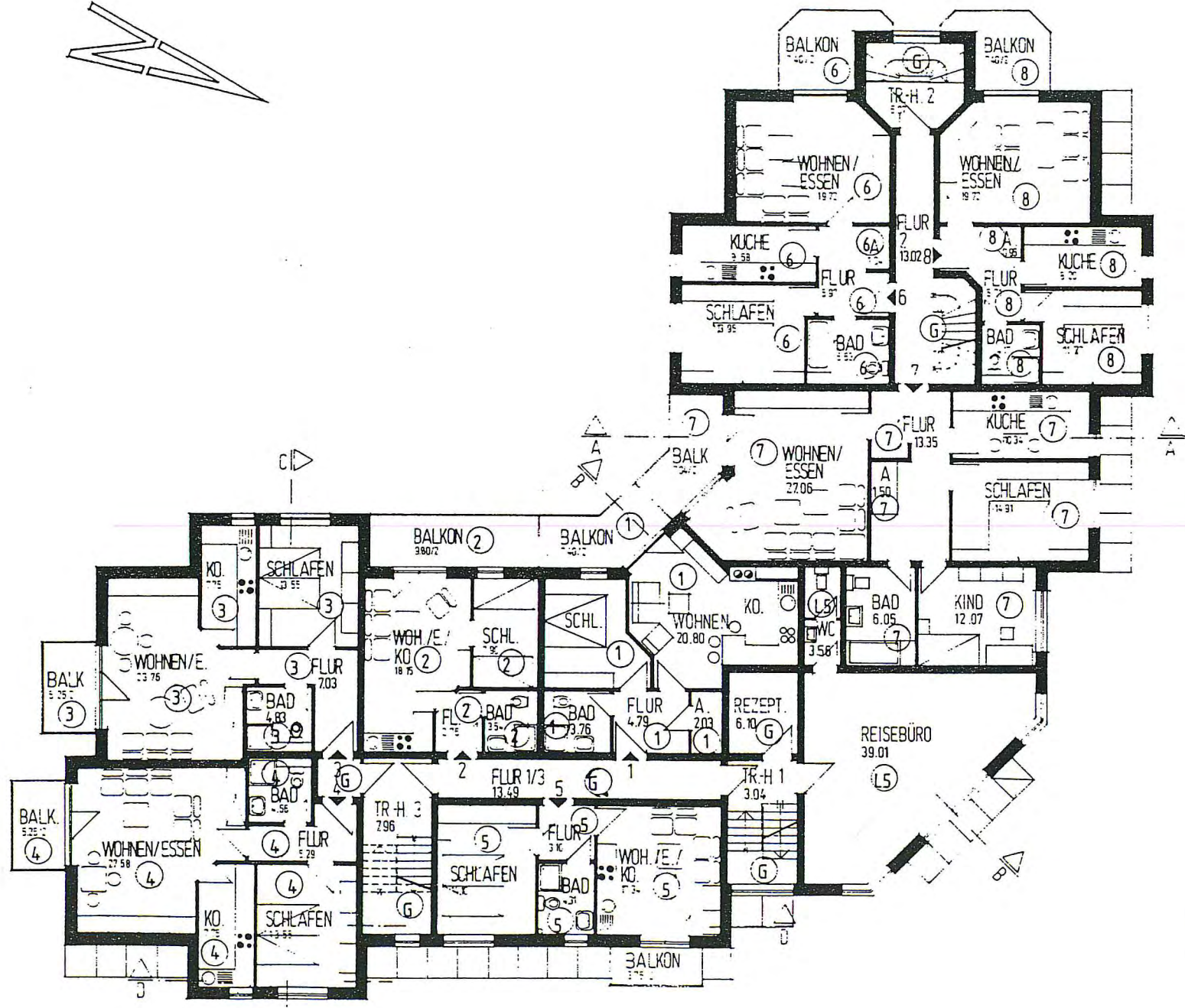
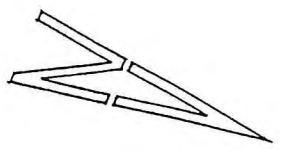


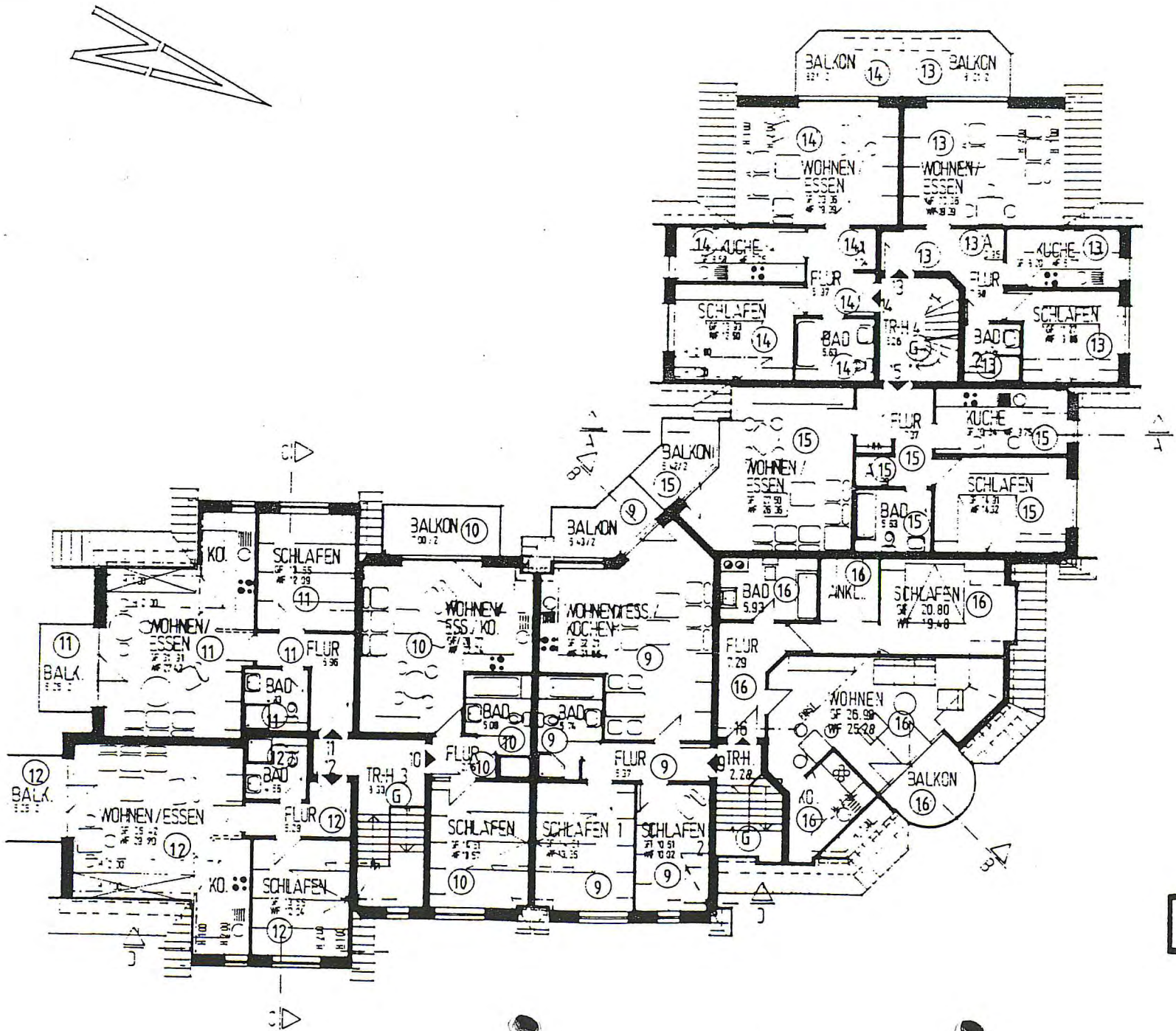
- Anlage 3 -

ERDGESCHOSS



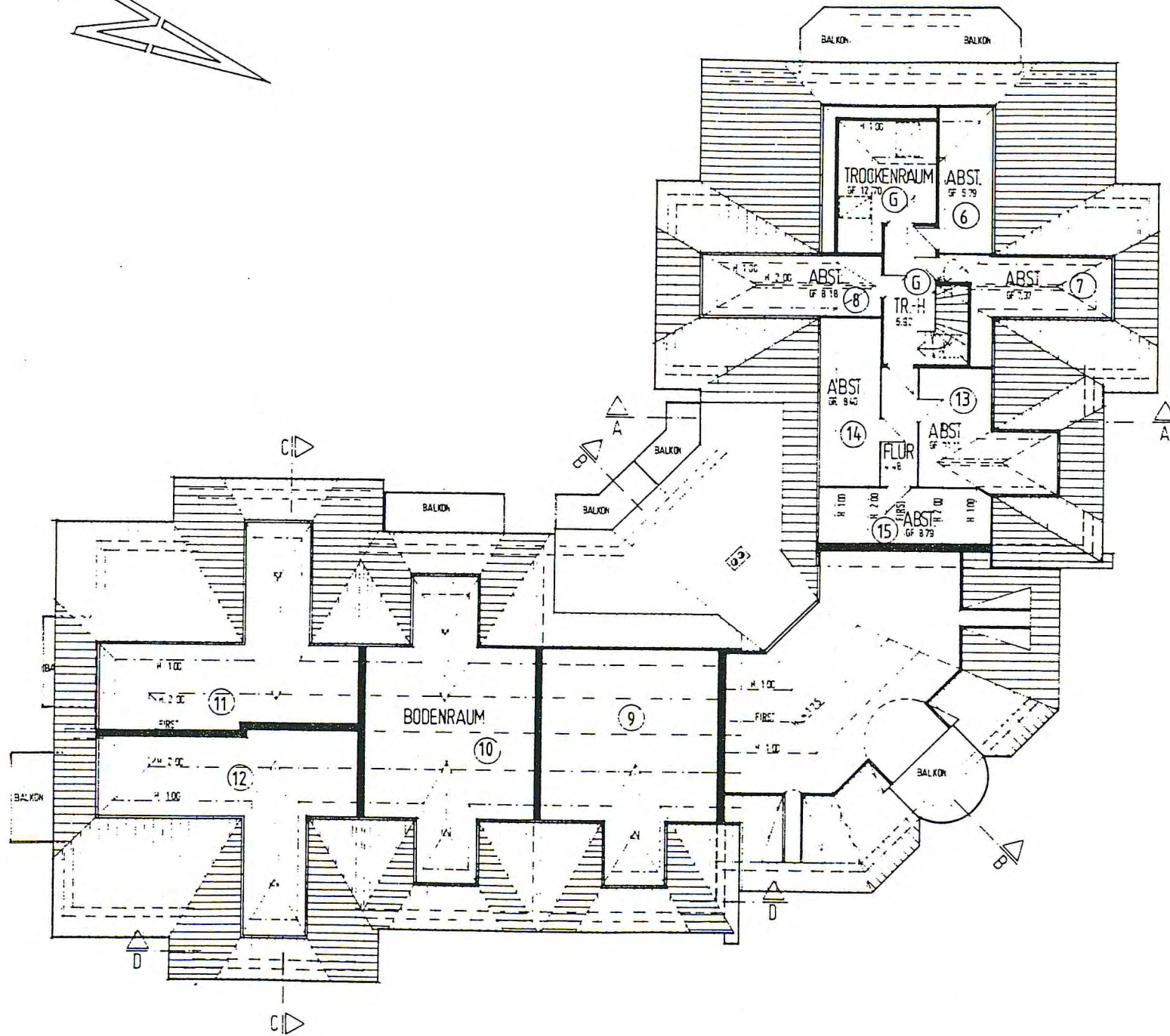
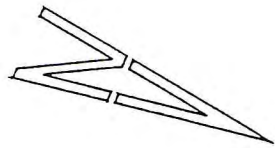
ANLAGE 3

OBERGESCHOSS



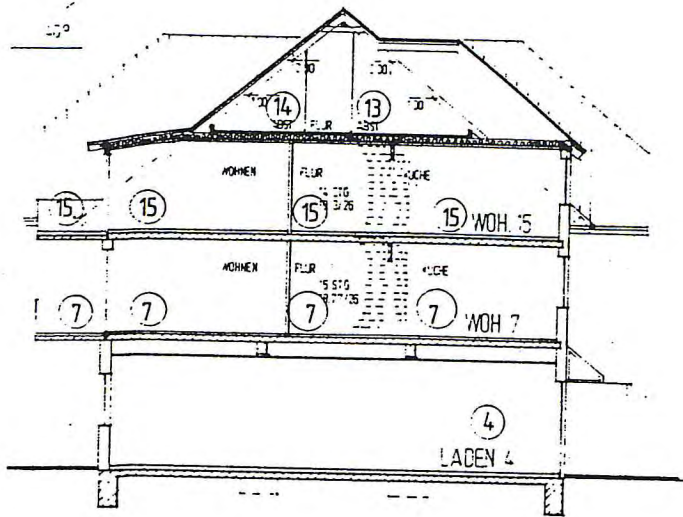
DACHGESCHOSS

1. STUCCO

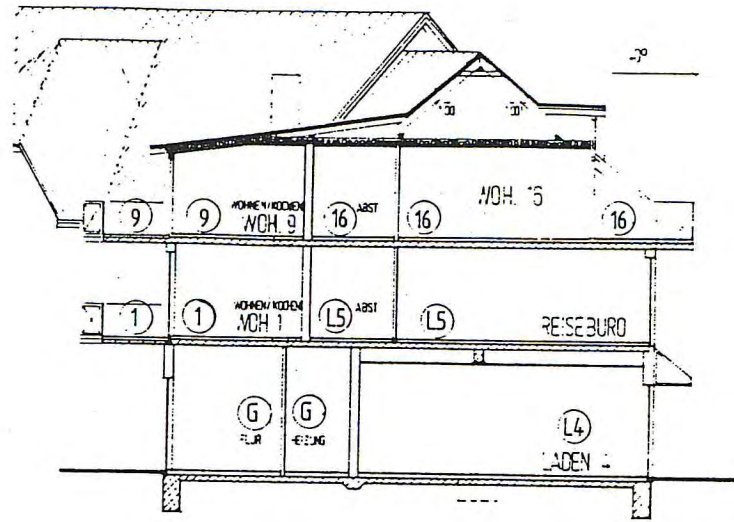


SPITZBODEN

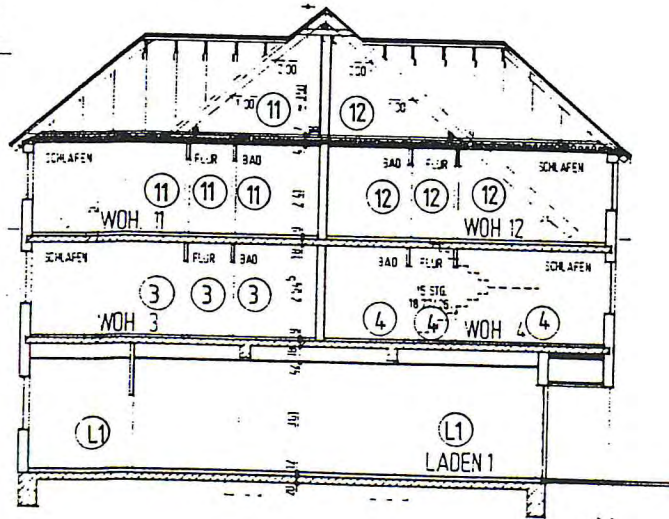
ANLAGE C



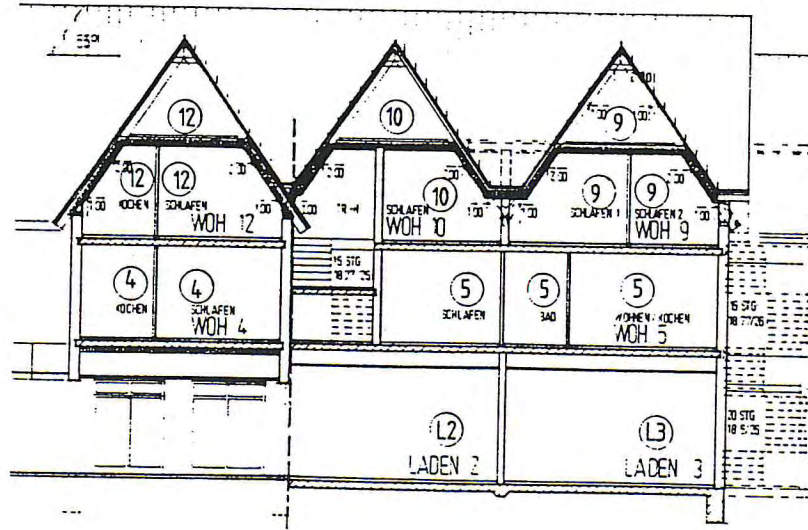
A-A



B-B



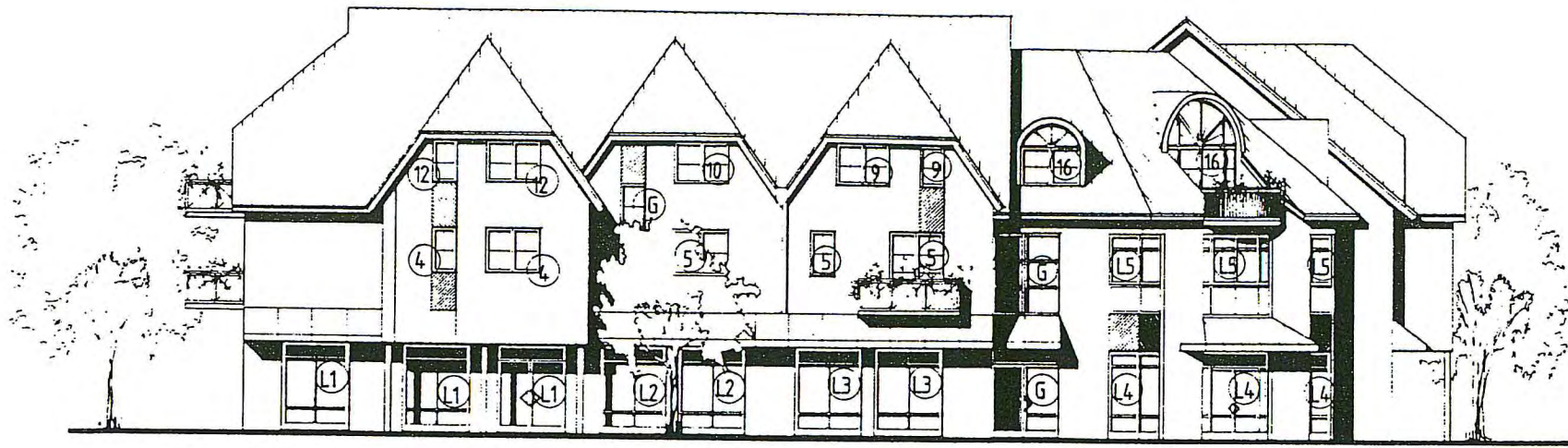
C-C



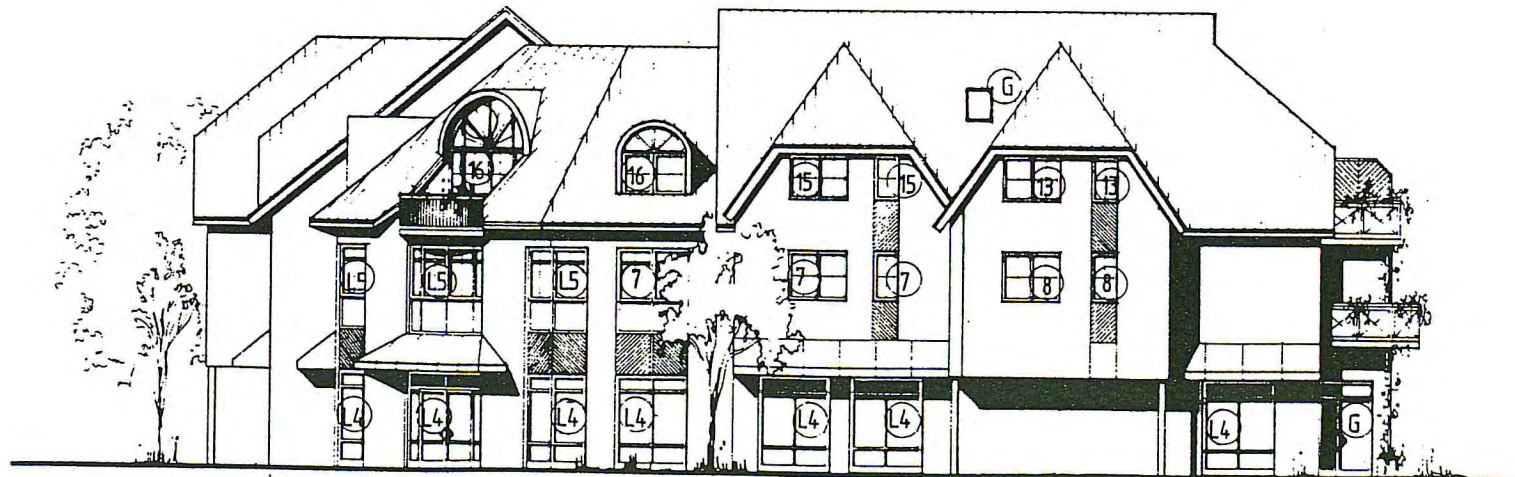
D-D

SCHEM...

CS



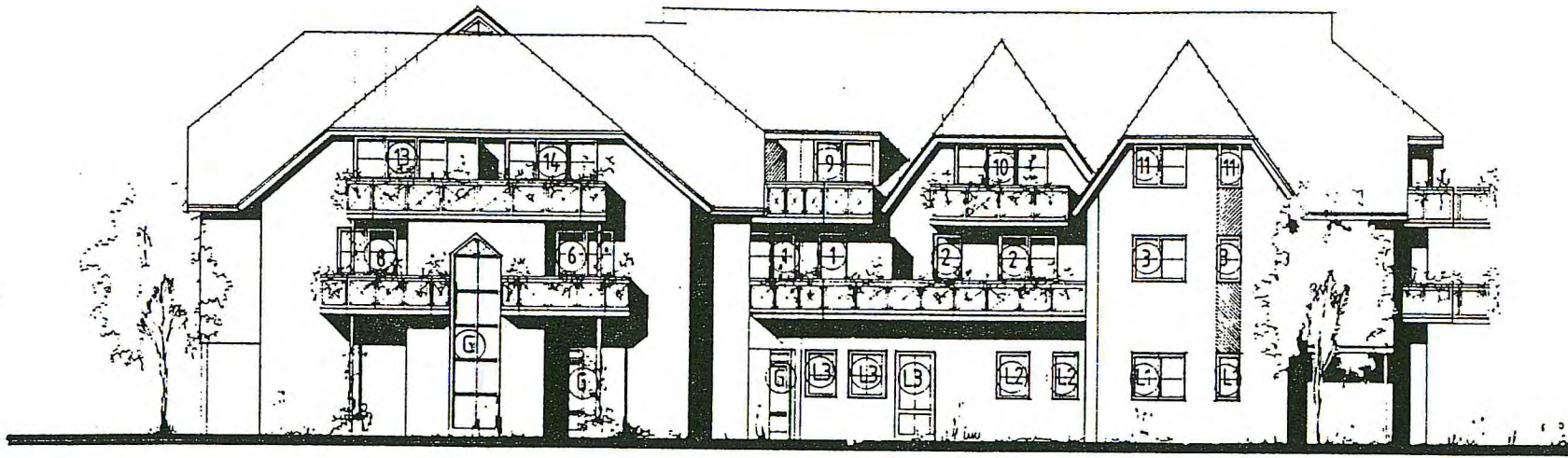
ANSICHT OSTEN -STRANDSTRASSE-



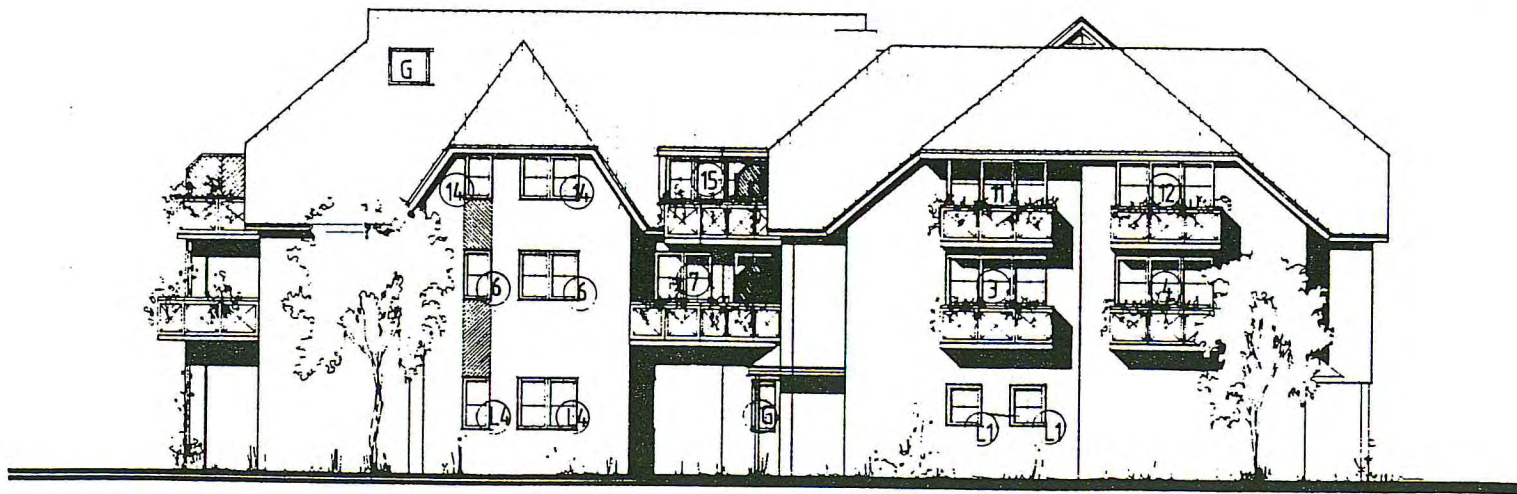
ANSICHT NORDEN -ALTE REIHE-

- Anlage 3 -

ANSICHTEN



ANSICHT WESTEN



ANSICHT SÜDEN

ANSICHTEN

BAU VOR
BAUF