

GARAGE
EXTENSIV
BEGRÜNT

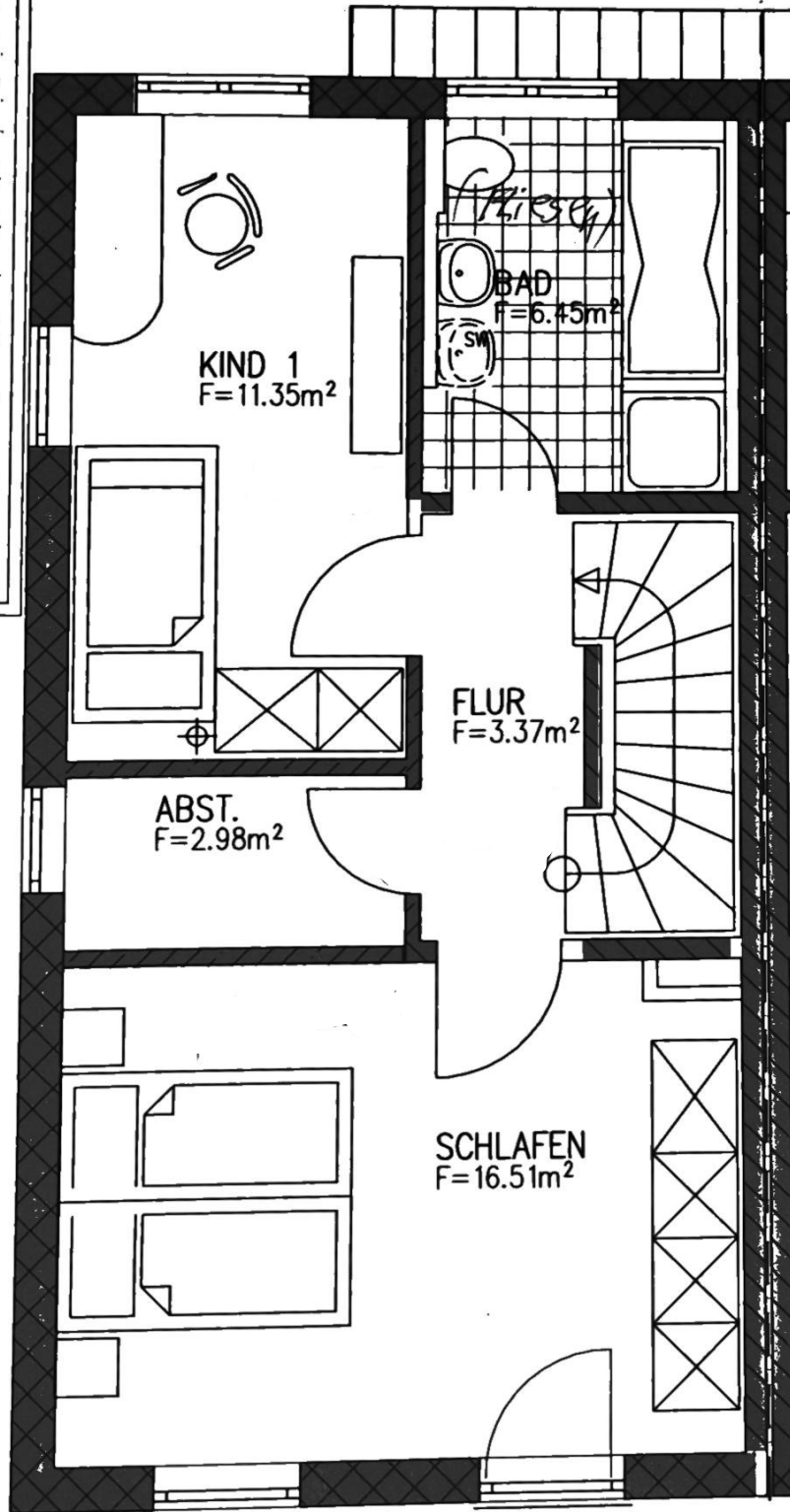
KIND 1
F=11.35m²

BAD
F=6.45m²

FLUR
F=3.37m²

ABST.
F=2.98m²

SCHLAFEN
F=16.51m²



GARAGE
GFH = +456.87

KOCHEN
F=6.24m²

ESSEN
F=8.58m²

WC
F=1.43m²

HAUS 1

WF
F=2.07m²

WOHNEN
F=24.33m²

EFH=RFB
= ±0.00 = +456.90

extensiv begrünt

2.30

