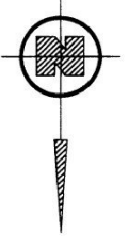
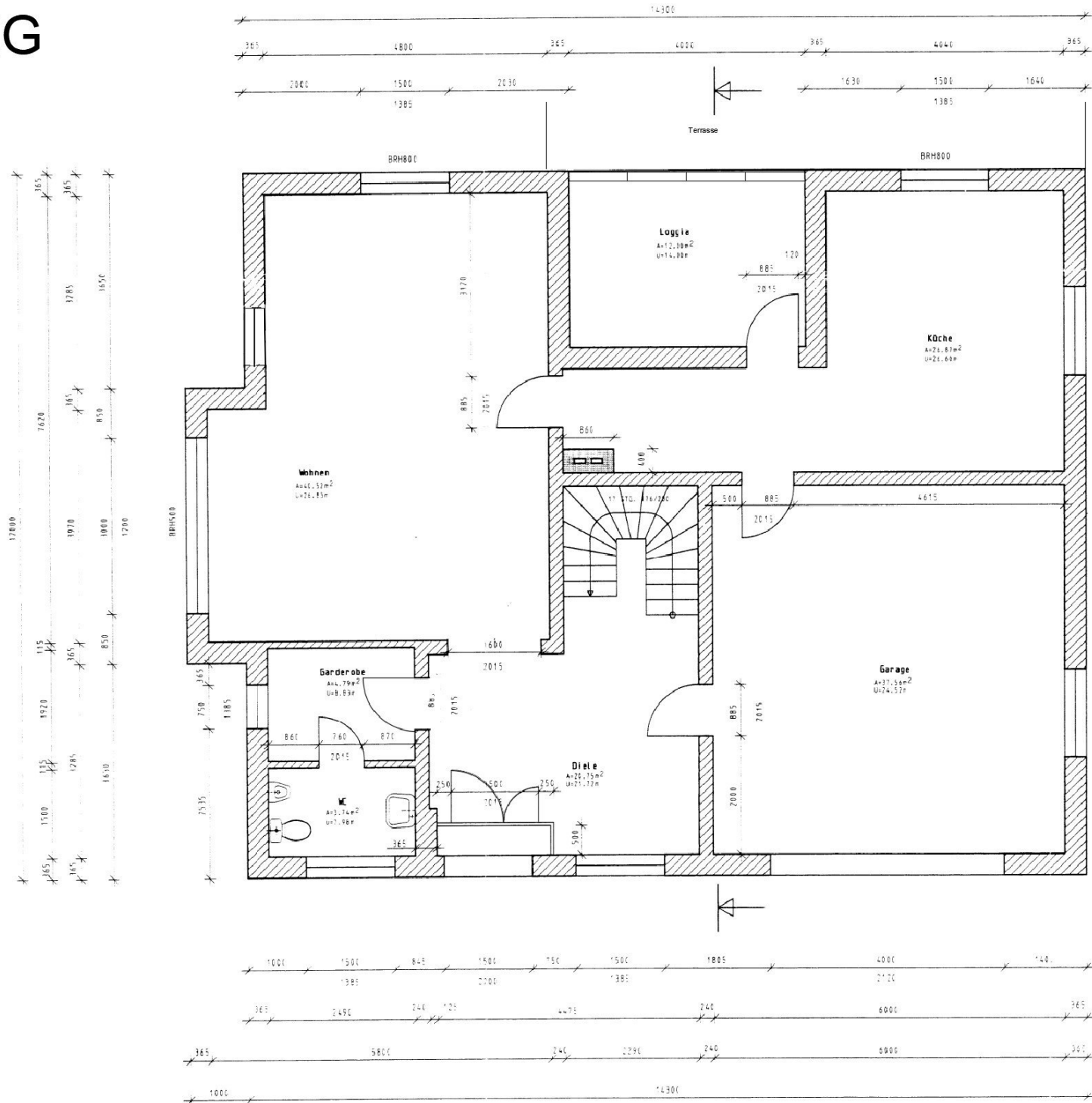
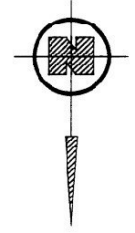
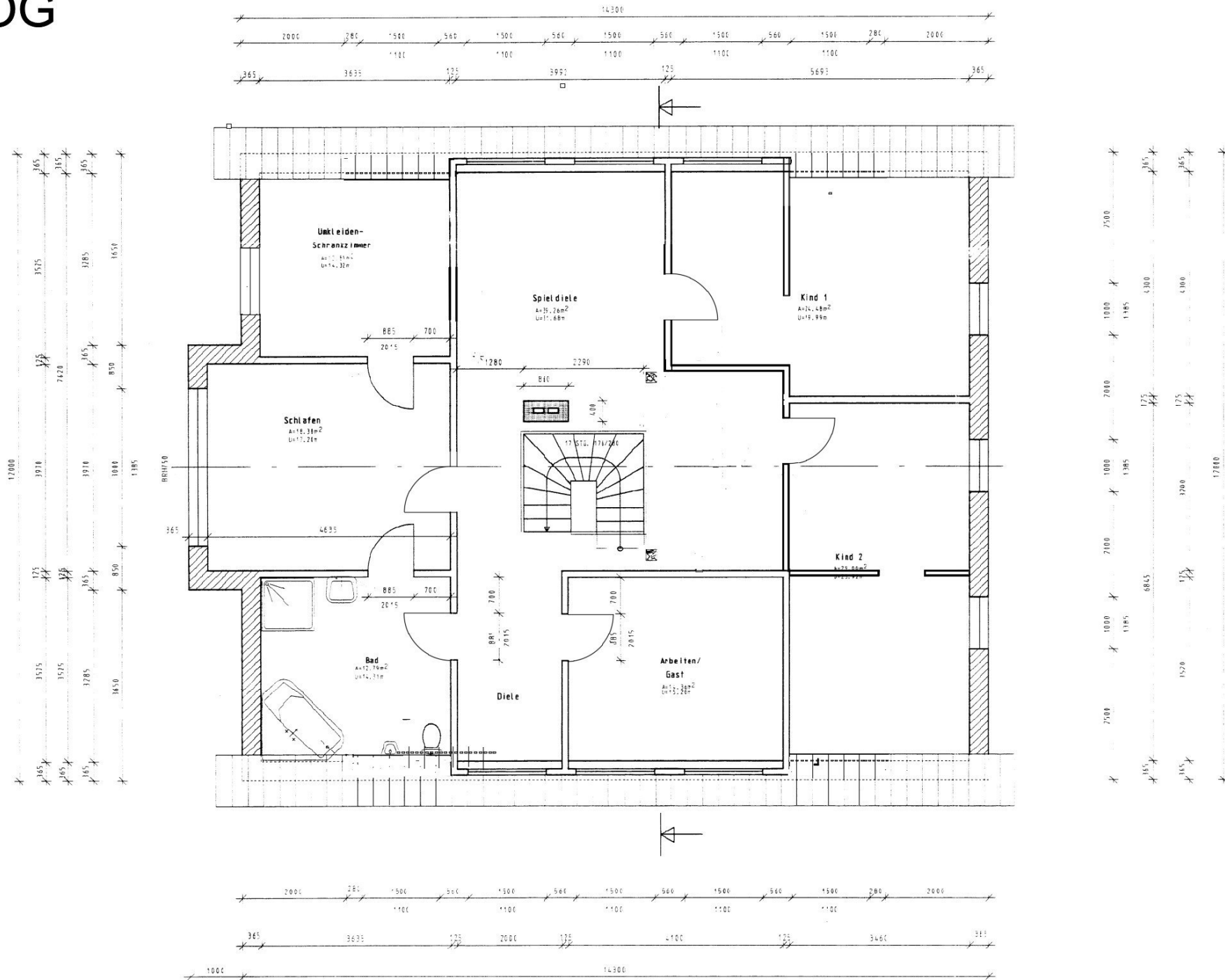


EG



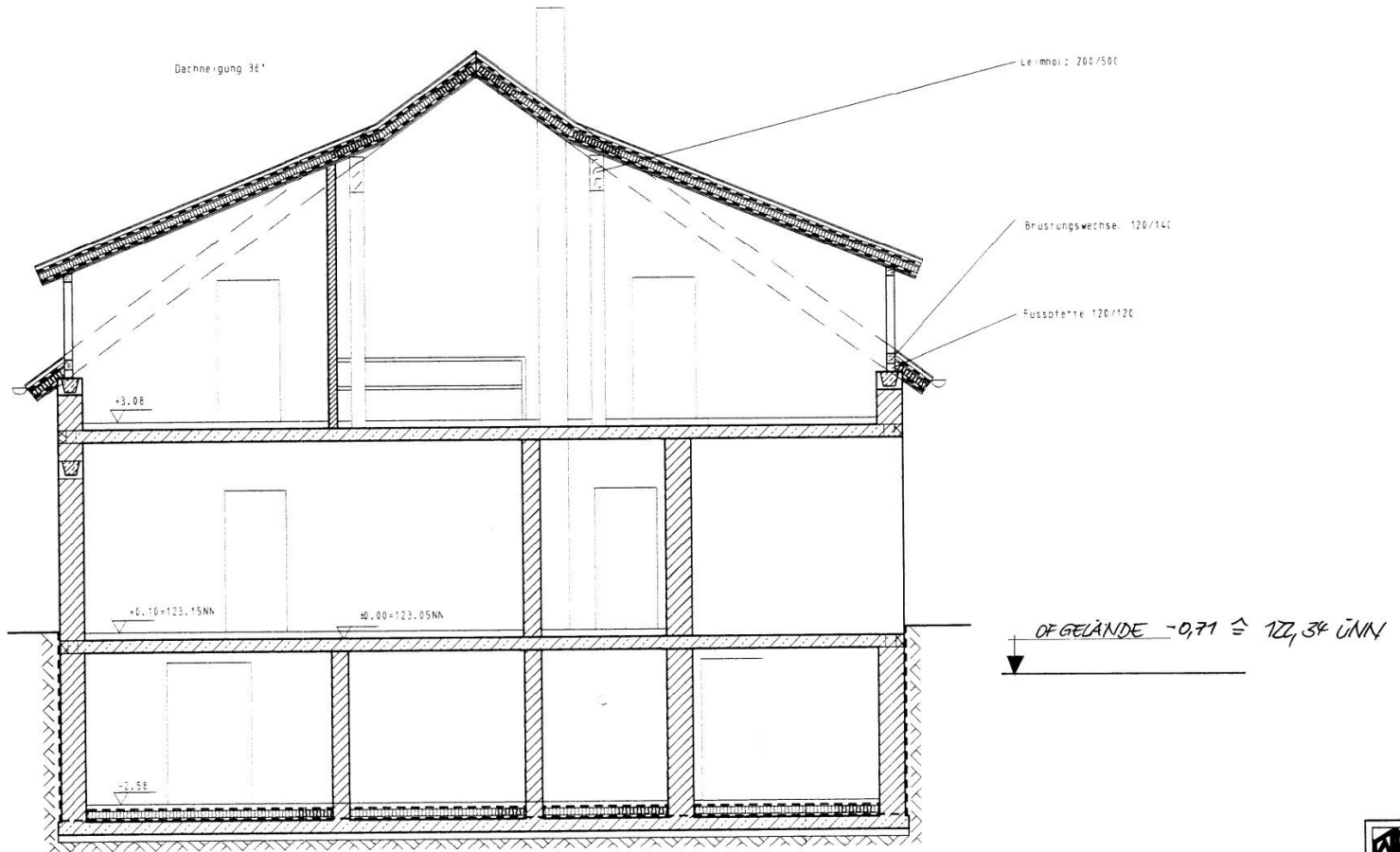
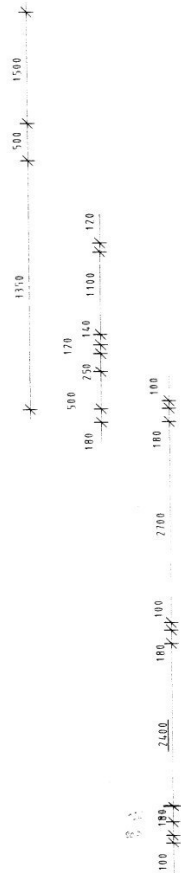
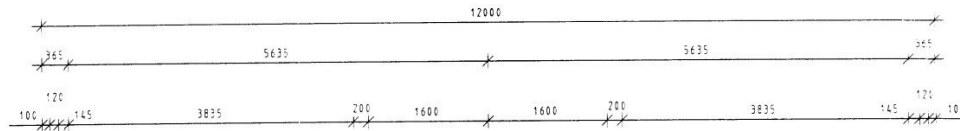
	INGENIEURBÜRO WOLFGANG KRAUSE
BALKER:	
PROJEKT:	Einwohnerhaus
TITEL:	Erdgeschoss
MAßSTAB:	1 : 50

OG




	INGENIEURBÜRO VOLFGANG KRAUSE
BAUER:	
PROJEKT:	Einfallterhaus
TITEL:	Dachgeschoss
MASSSTAB:	1 : 50

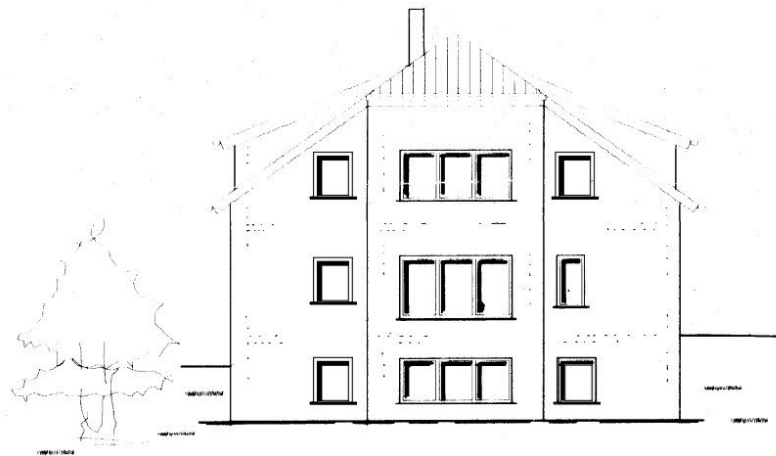
Schnitt



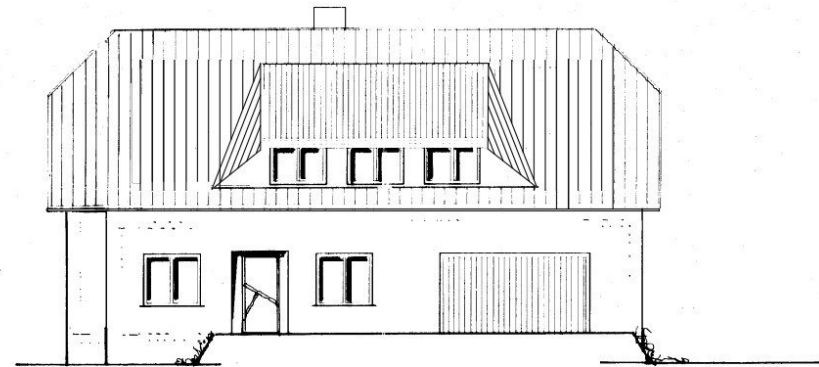
- 40 mm Estrich
- 1 Lage Folie
- 100 mm Mineralwolle Dämmung
- 1 Lage Folie
- 180 mm Stahlbeton

	INGENIEURBÜRO VOLFGANG KRAUSE
BALNEUR:	
PROJEKT:	Erholungshaus
TITEL:	Schnitt
MASSSTAB:	1 : 50

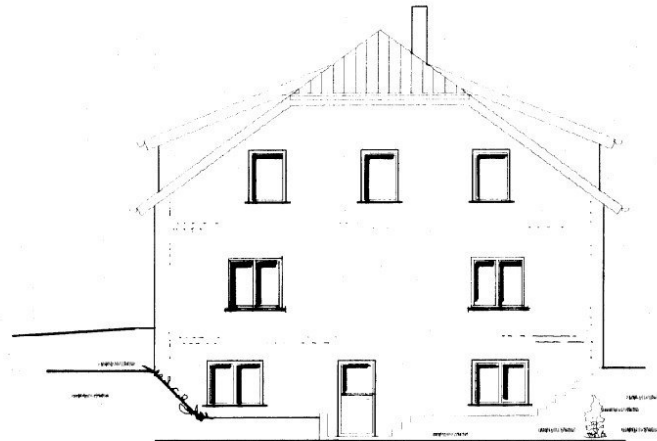
Ansichten



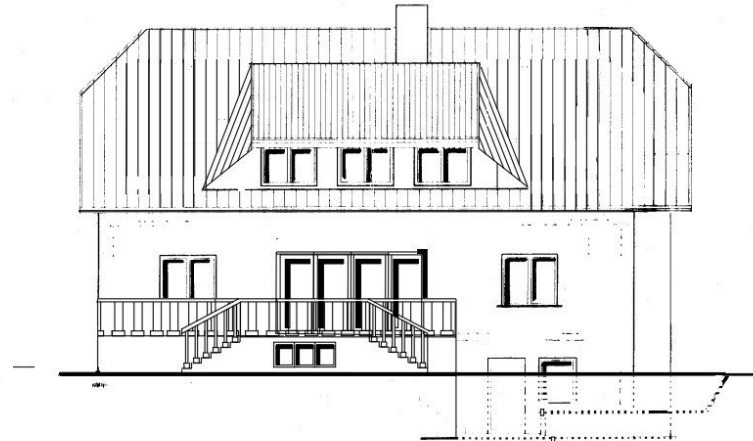
Ostansicht




Nordansicht



Westansicht



Südansicht

	INGENIEURBÜRO WOLFGANG KRAUSE
NAMEN:	
PROJEKT:	Entwicklerhaus
TITEL:	Ansichten
MASSSTAB:	1 : 100