

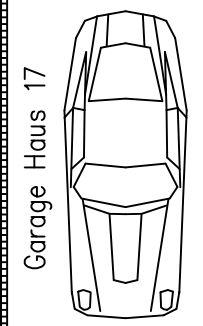
Strasse

504.00
Höhenbezugspunkt
-0.15

ABFL 6,28 m

Garage Dongmo

Flurnr: 552/84
31.50 m²



Garage Haus 17

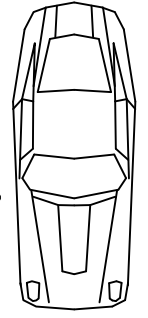
B

6.00
4.50

ABFL 16,28+(3x3,81) x 1/2 = 3,77 m

Baugrenze

Garage Haus 18



Stellplatz

Stellplatz

7.07

6.24

36⁵

3.62

17⁵

2.73⁵

17⁵

3

17⁵

2.51⁵

17⁵

3.20

17⁵

3

-0.15

-0.15

Küche
11.94 m²

2.04m²
WC

2.04m²
WC

Küche
10.56 m²

Diele
6.46 m²

Diele
6.00 m²

Wohnen
Essen
37.13 m²

Wohnen
Essen
33.67 m²

1.51x2.26

1.51x2.26

1.51x2.26

1.51x2.26

-0.15

-0.15

Terrasse
11.76 m²

Terrasse
11.76 m²

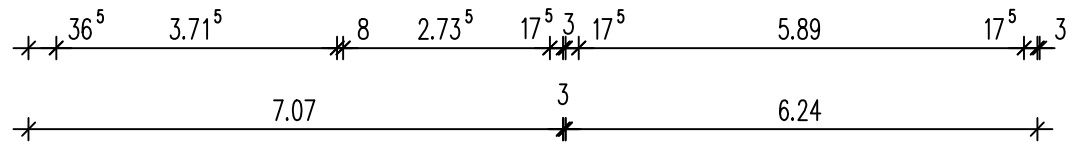
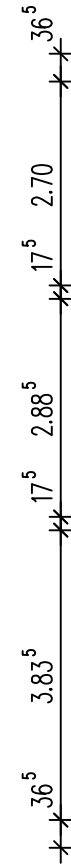
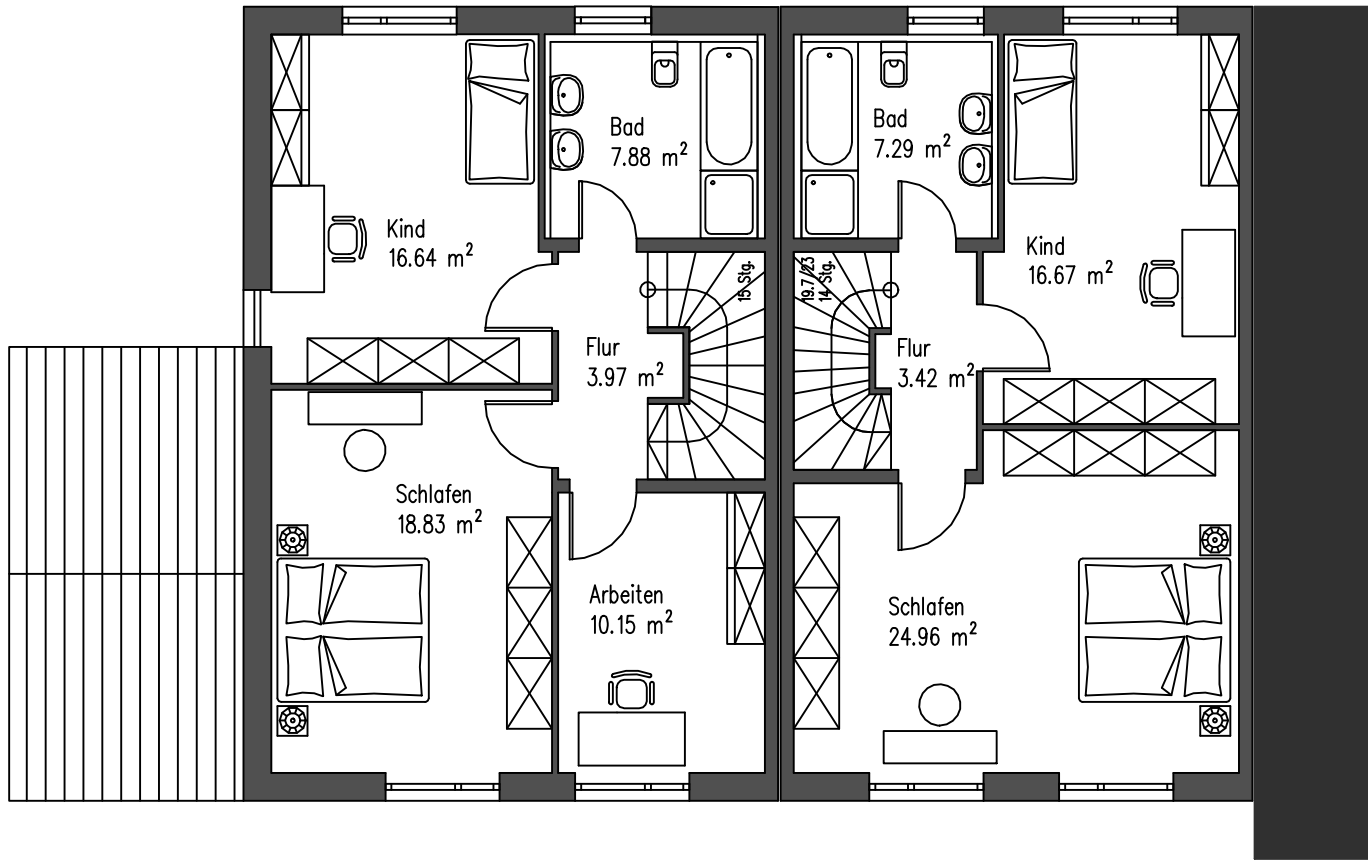
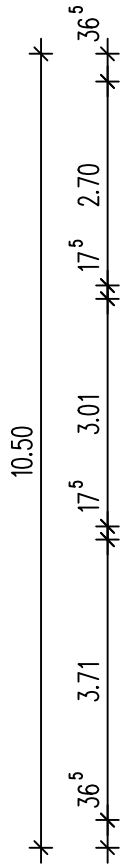
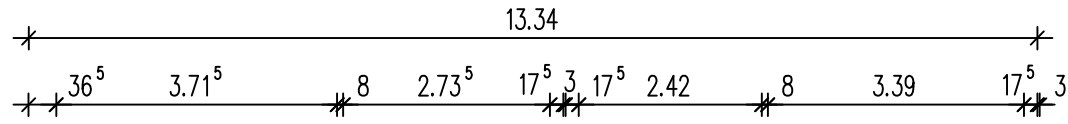
A

36⁵
17⁵ 2.88⁵
17⁵ 87
8 1.75
36⁵

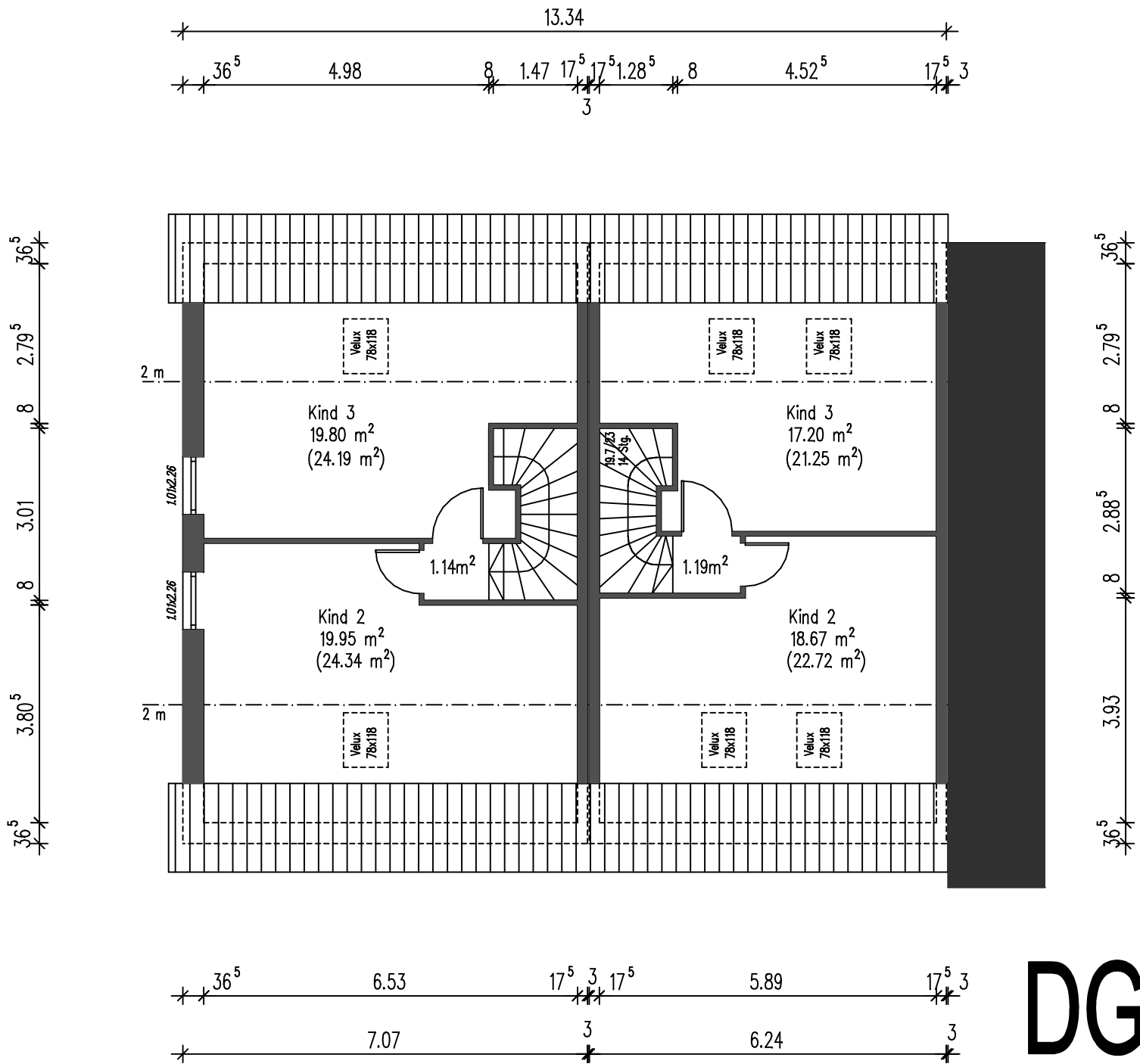
36⁵
8 3.30
36⁵

10.50

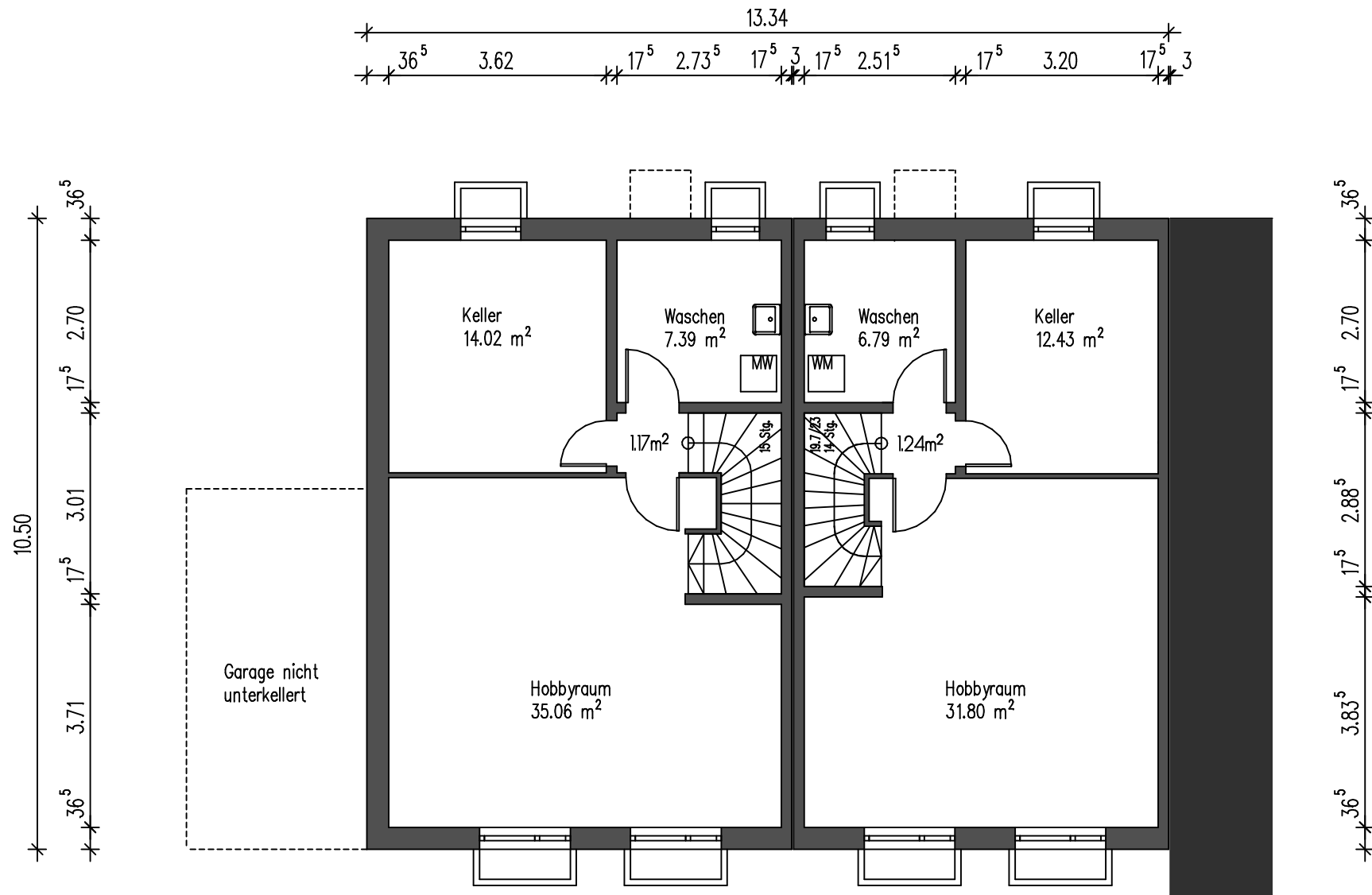
4.50



OG



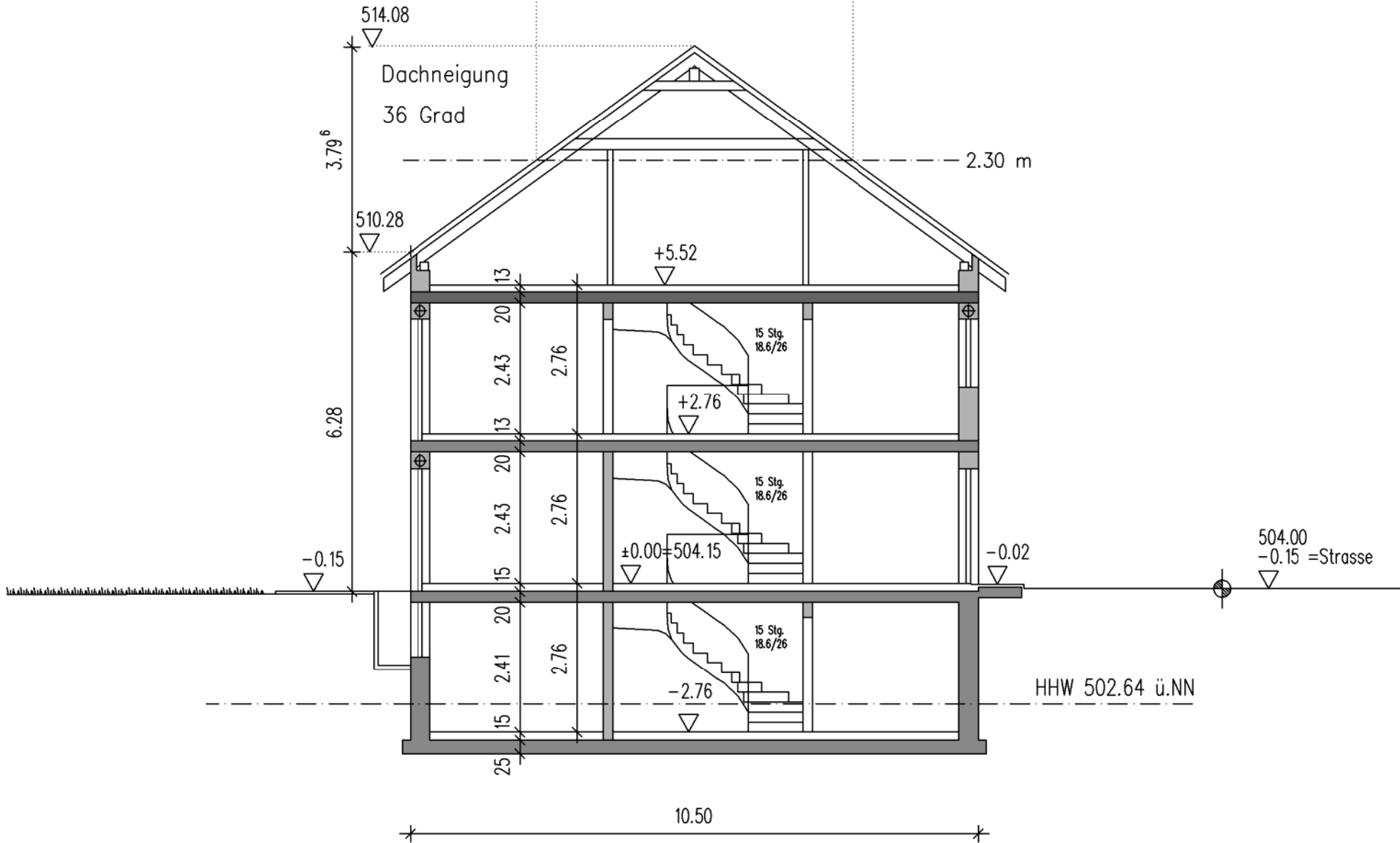
DG



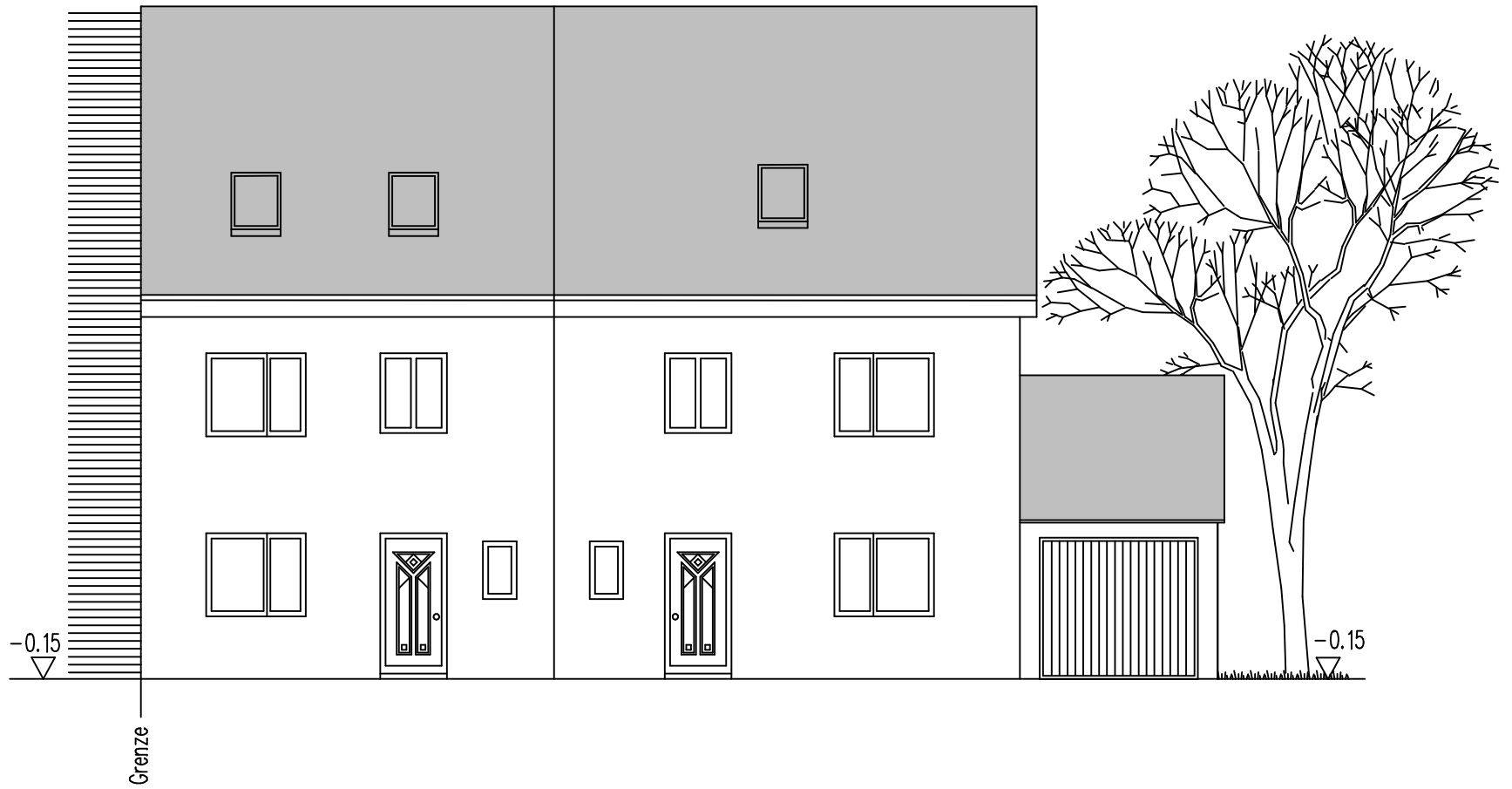
KG

$10.50 \times 2/3 = 7,00 \text{ m} > 5.85$ - DG kein Vollgeschoss.

5.84⁸



Schnitt A-A



Nord-Osten



Süd-Westen



Nord-Westen