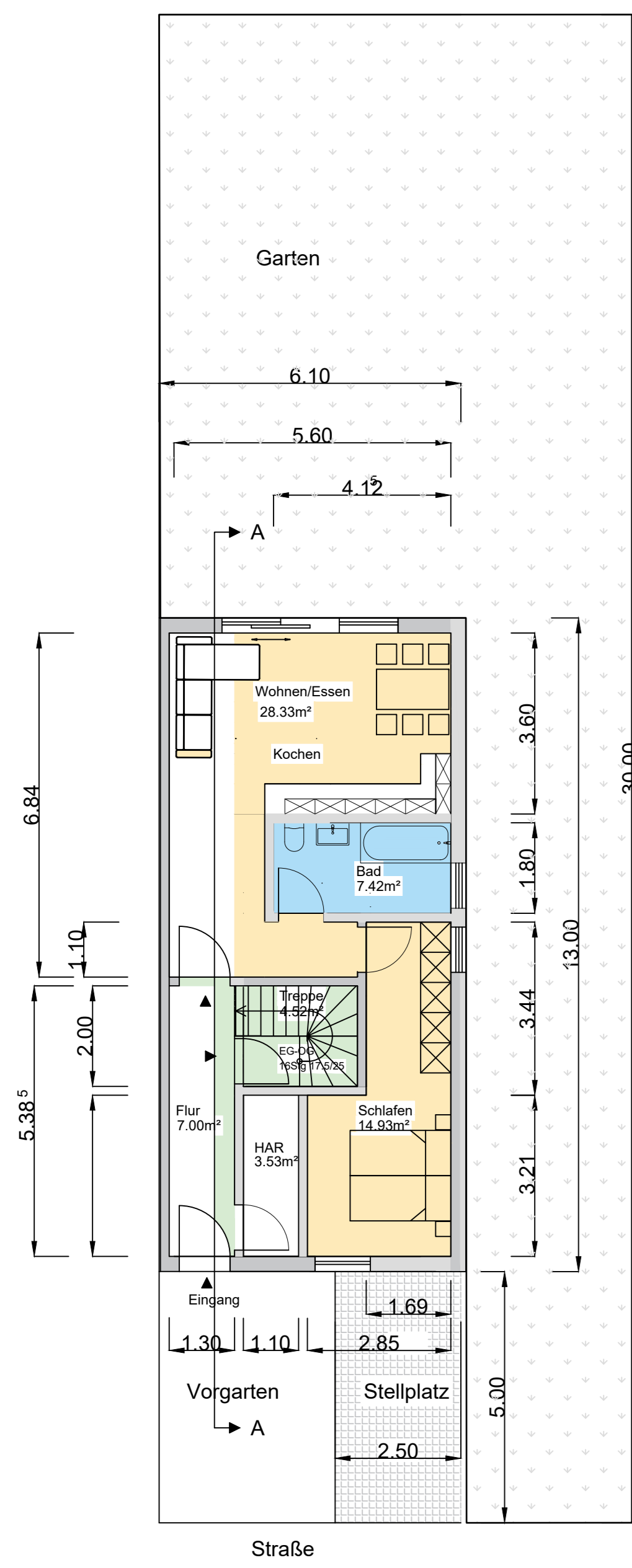


Haustyp E

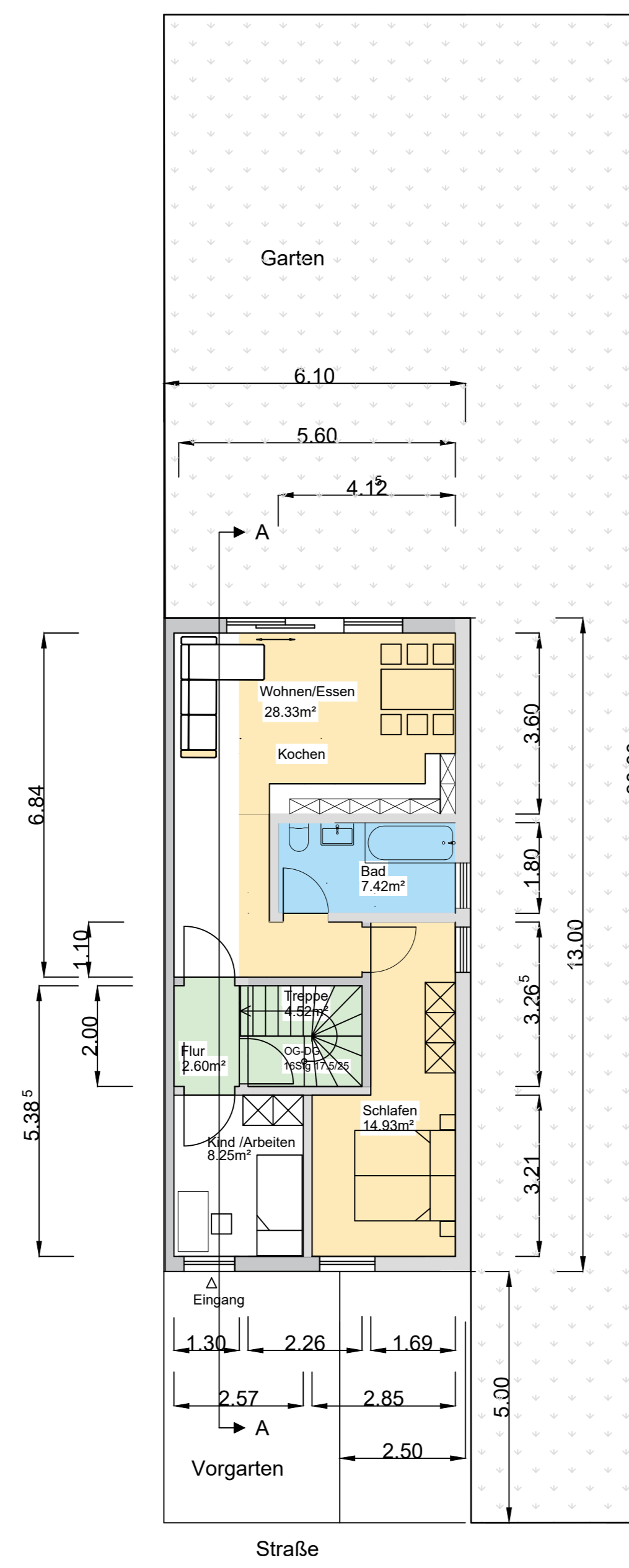
Reihenendhaus

2 geschossig

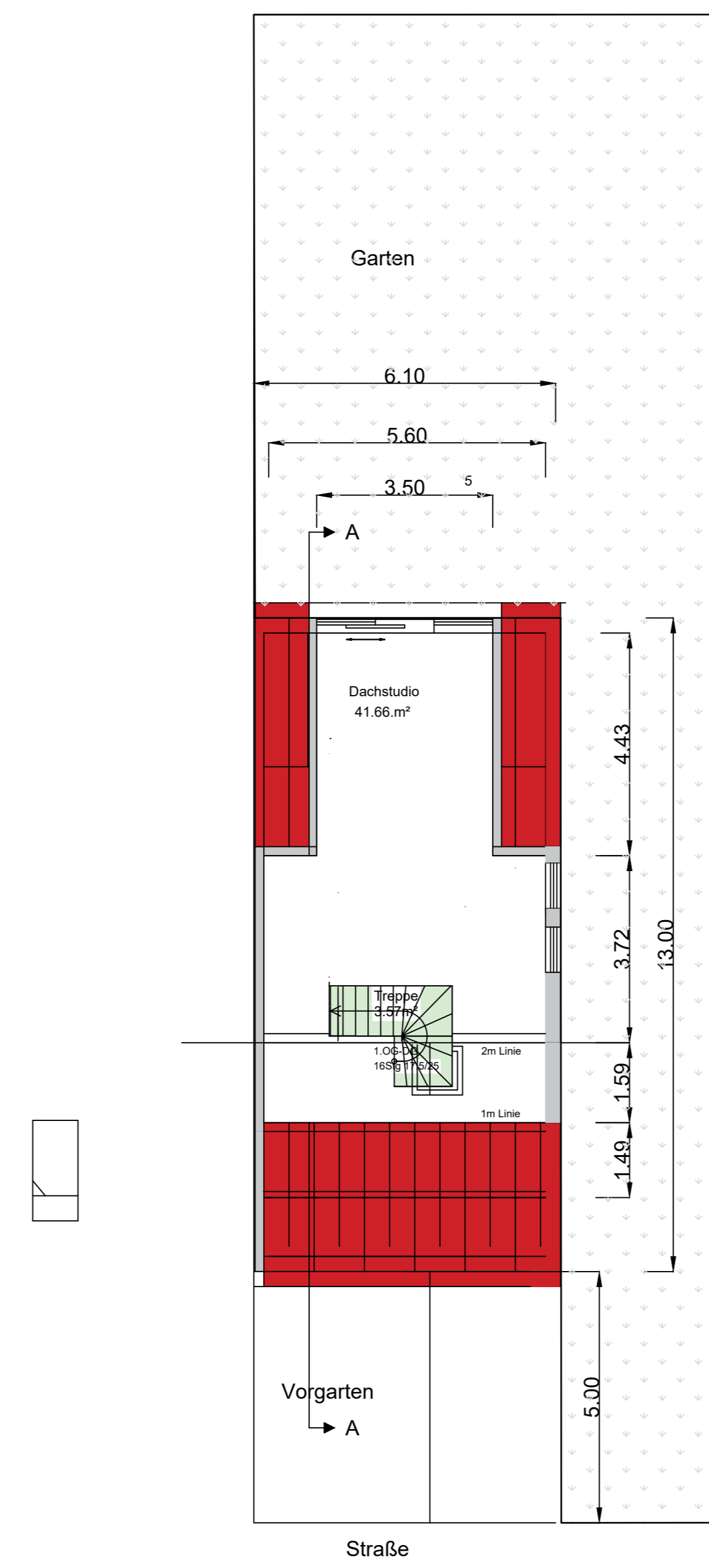
Erdgeschoss
65.73m²



1.Obergeschoss
66.05m²

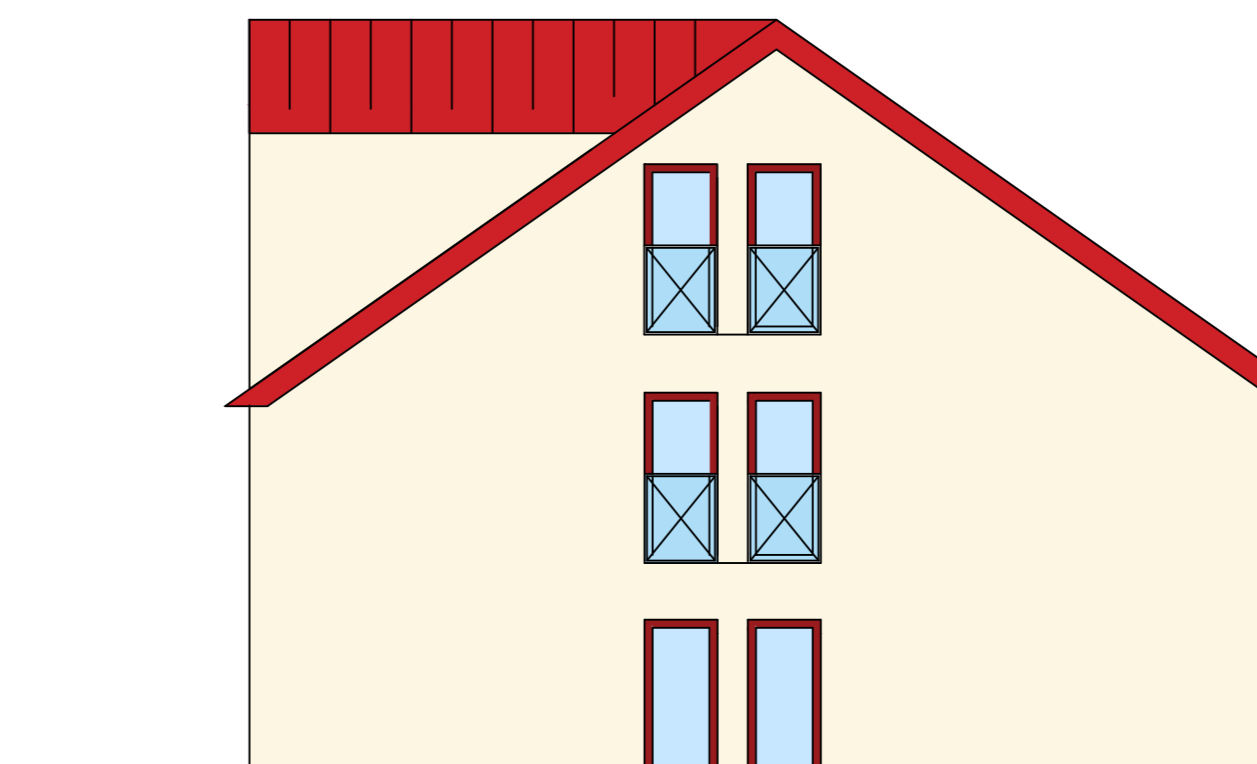


DG
41.66m²

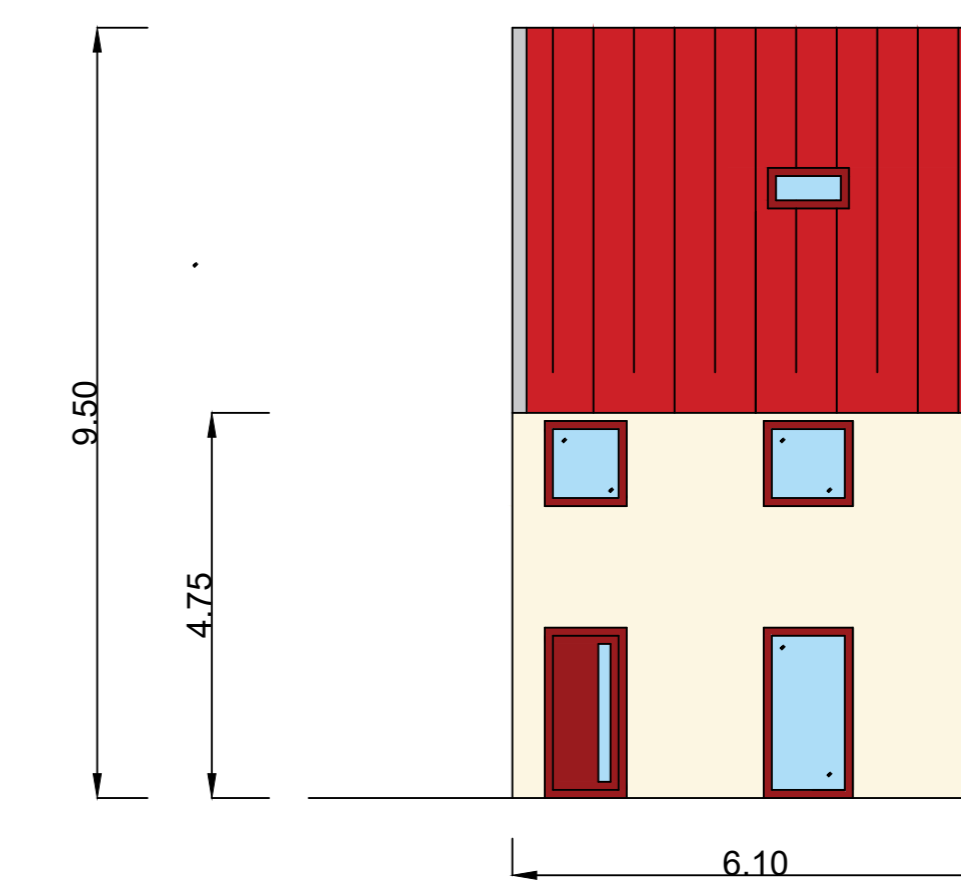


Nettofläche
173.44m²

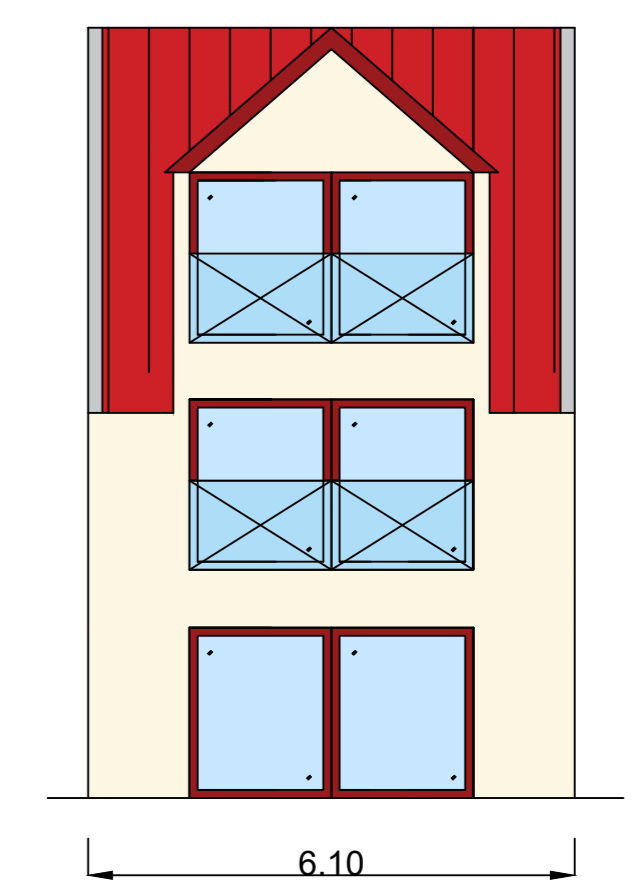
Halle
KaiserslautererStr/Waldhornweg
Eigentümer: 1. Wörmitzer Immobilien GmbH
Hafenstr. 12
04416 Markkleeberg



Straßenansicht



Ansicht Garten mit Hebe-schiebe Elementen



Schnitt A - A

