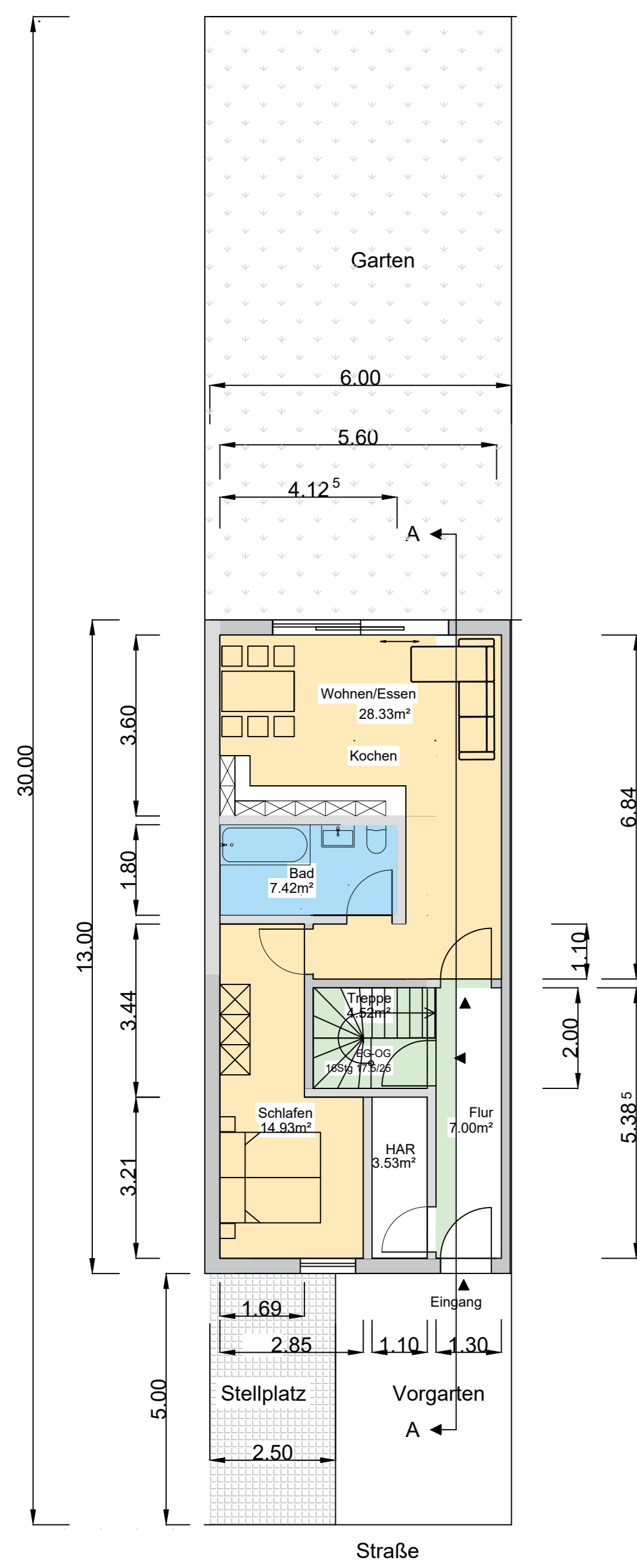


# Haustyp C

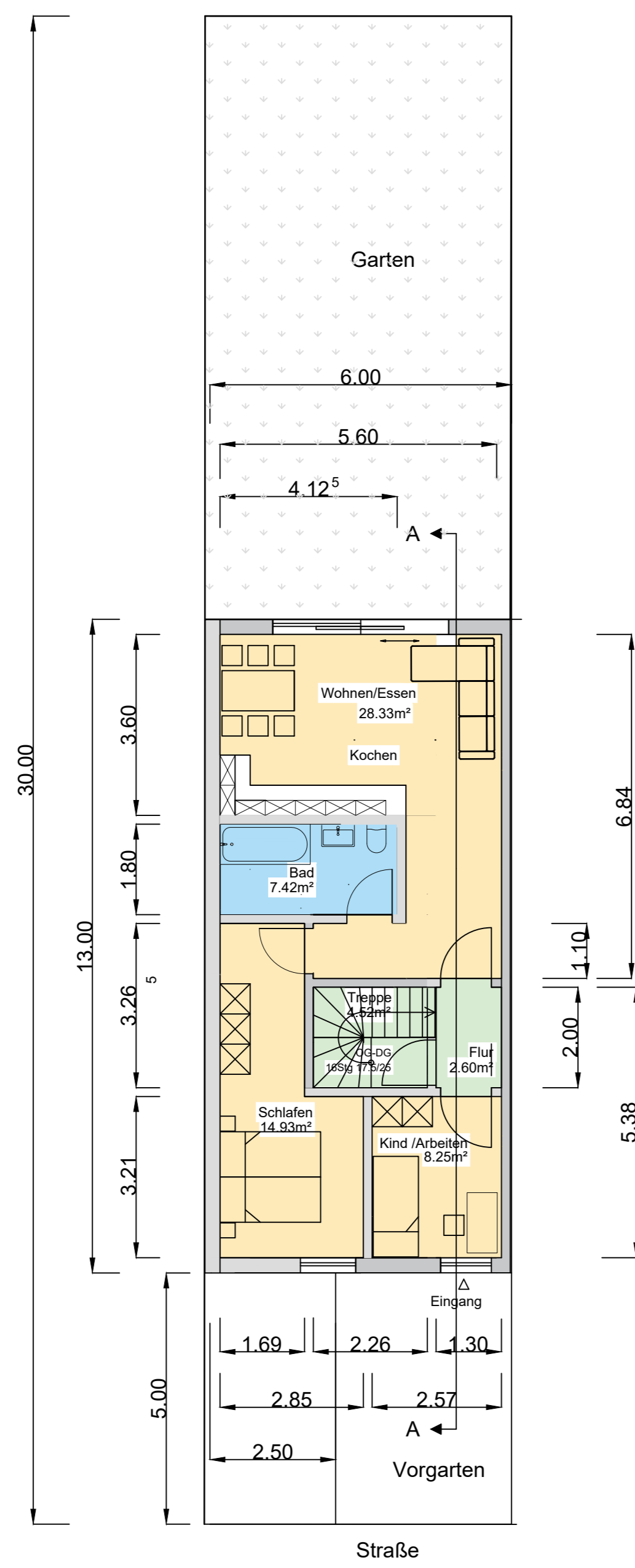
## Reihenhaus

3 geschossig

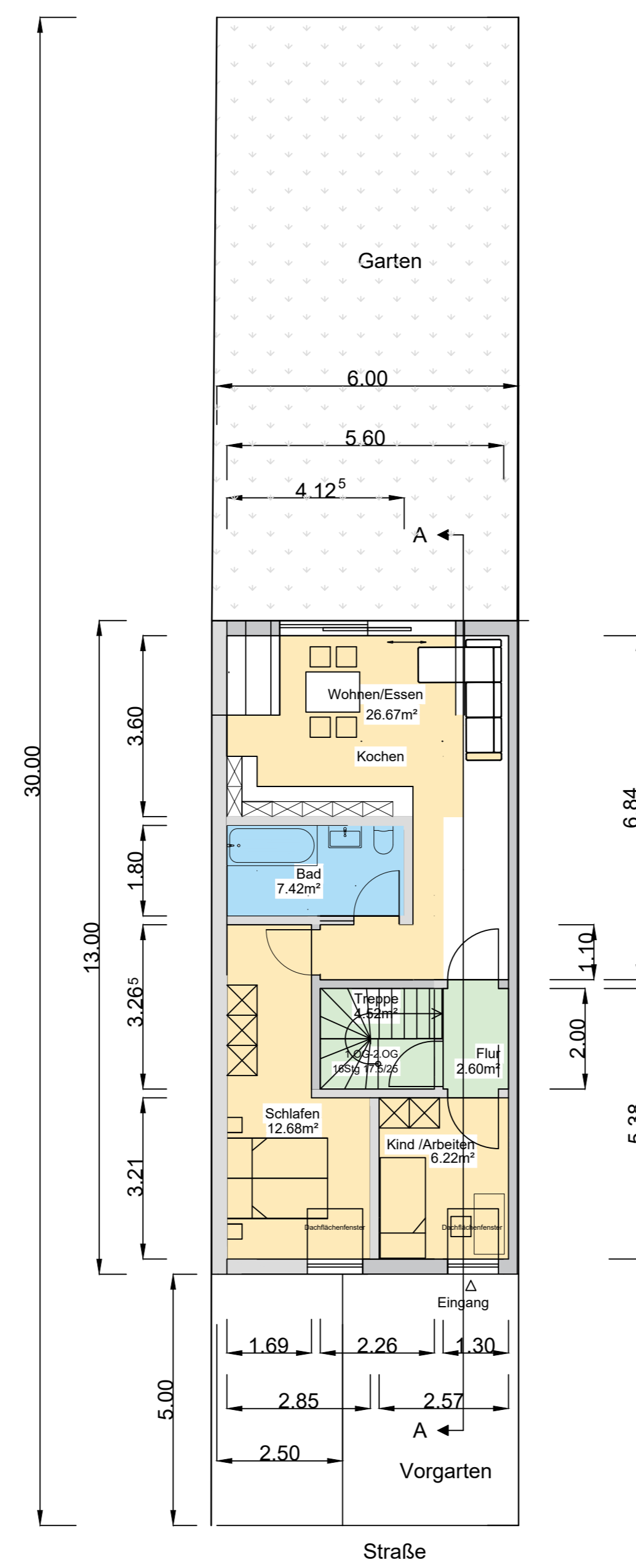
**Erdgeschoss**  
65.73m<sup>2</sup>



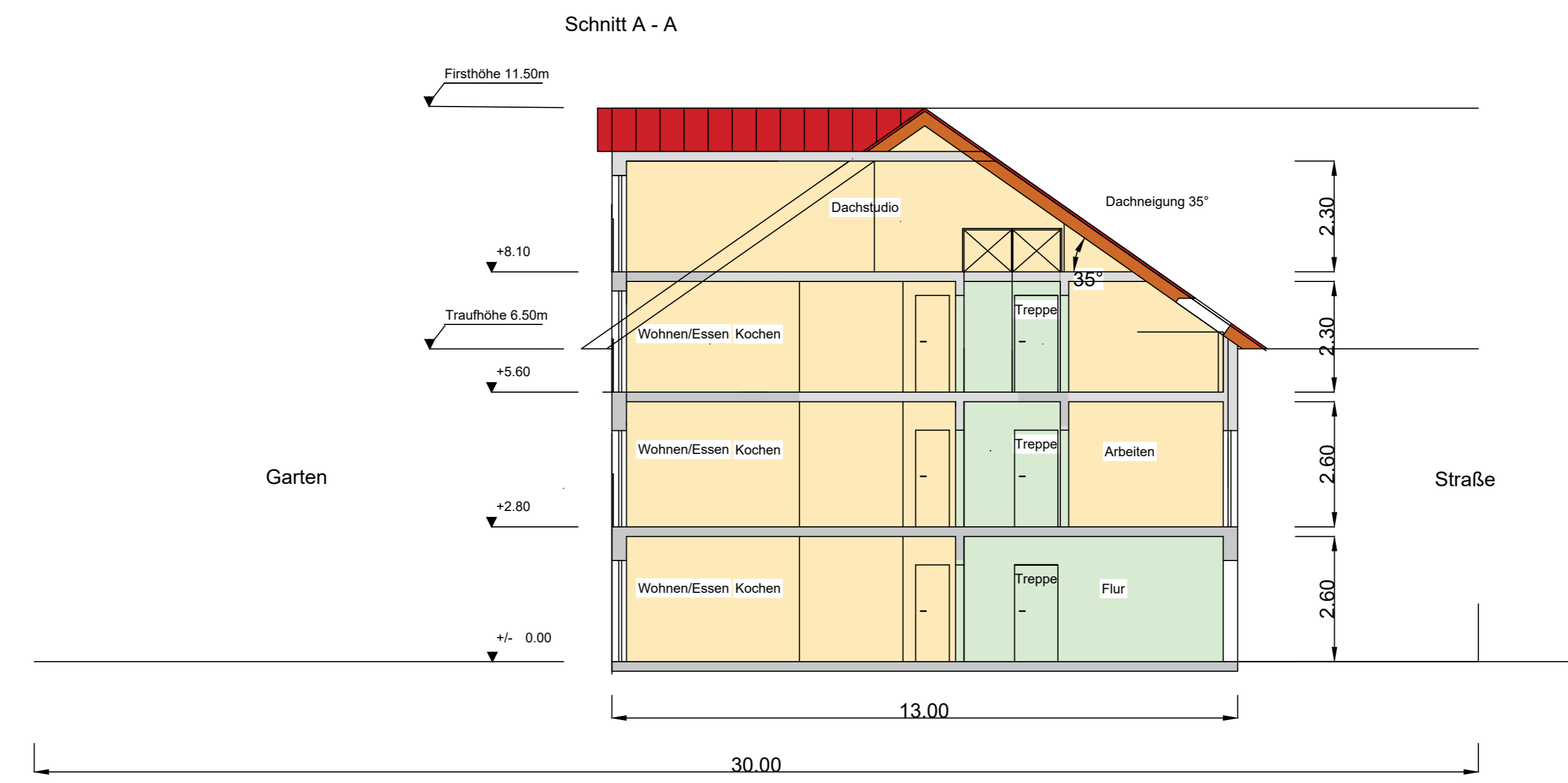
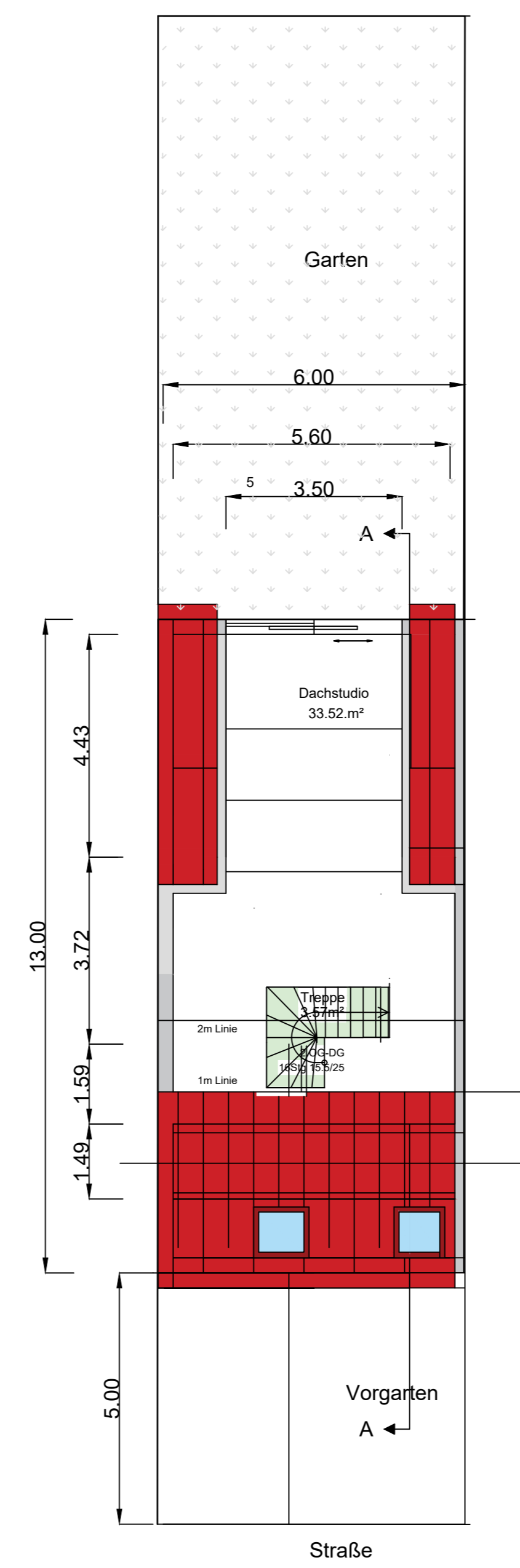
**1.Obergeschoss**  
66.05m<sup>2</sup>



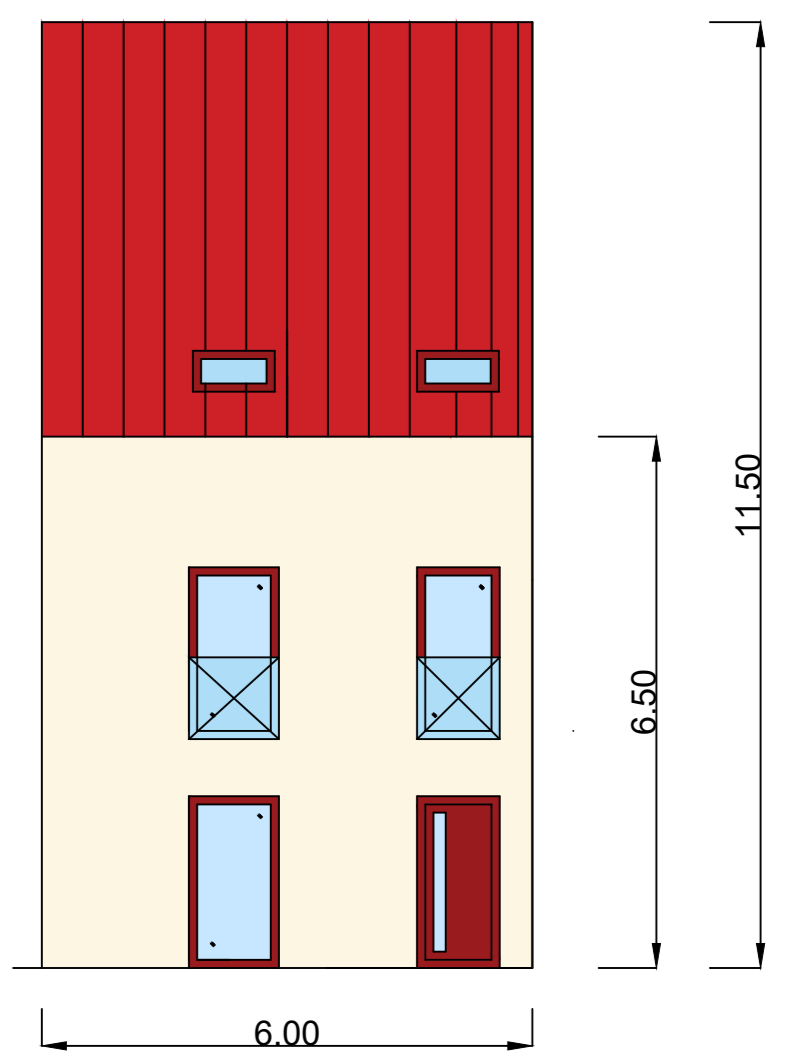
**2.Obergeschoss**  
60.11m<sup>2</sup>



**Dachgeschoss**  
33.52m<sup>2</sup>



Ansicht Straße



Nettofläche  
225.41m<sup>2</sup>

Halle  
KaiserslautererStr/Waldhornweg

Eigentümer: 1 Wömlitzer Immobilien GmbH  
Hafenstr. 12  
04116 Markkleeberg

Ansicht Garten mit Hebe-schiebe Elementen

