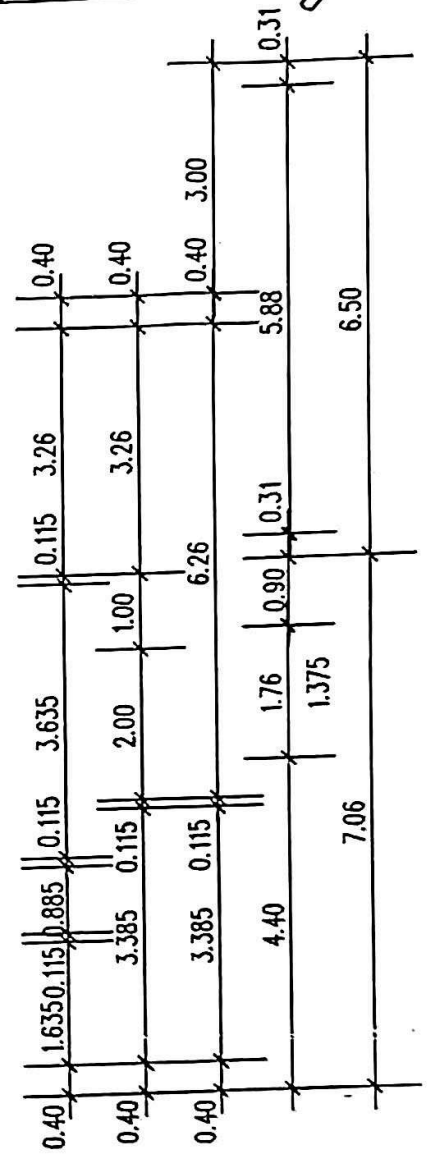


mit
~~ohne~~ Garage!

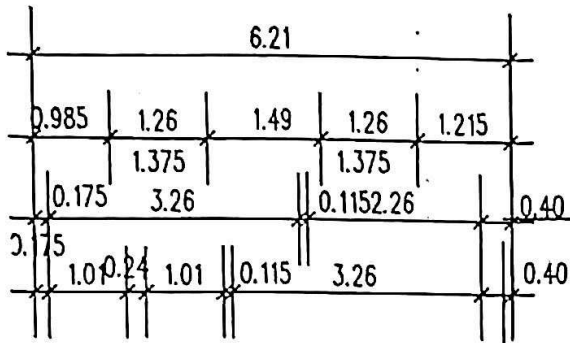


10.07.09

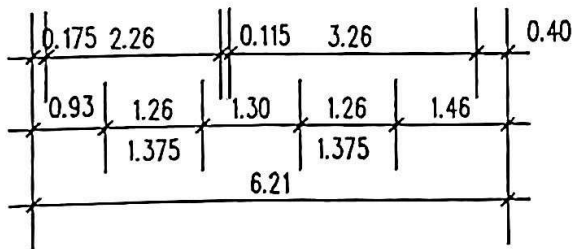
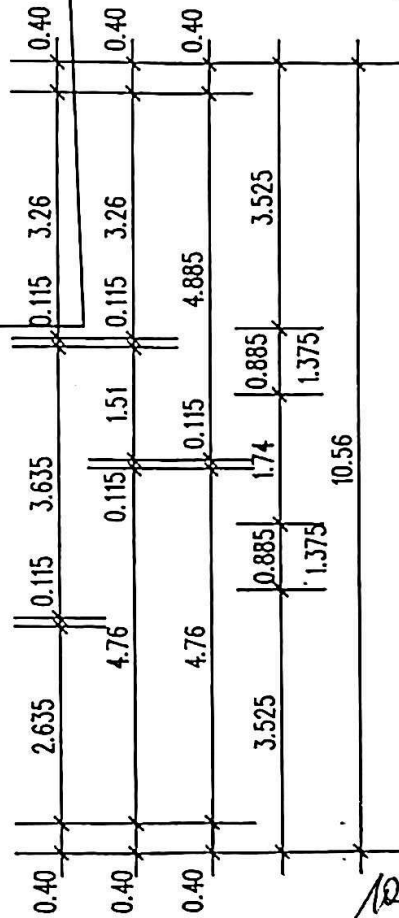
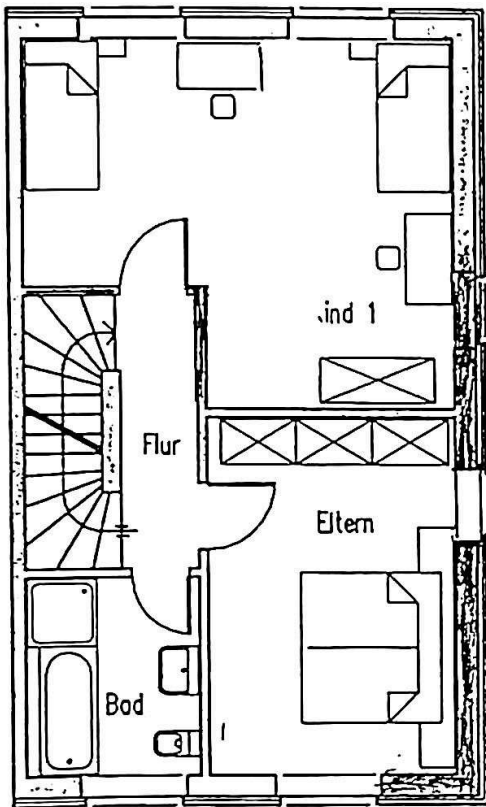
ohne Möbel

Erdgeschoß

Handwritten signature:
G. Erwin
Ch. Erwin Arch. No. 1002.

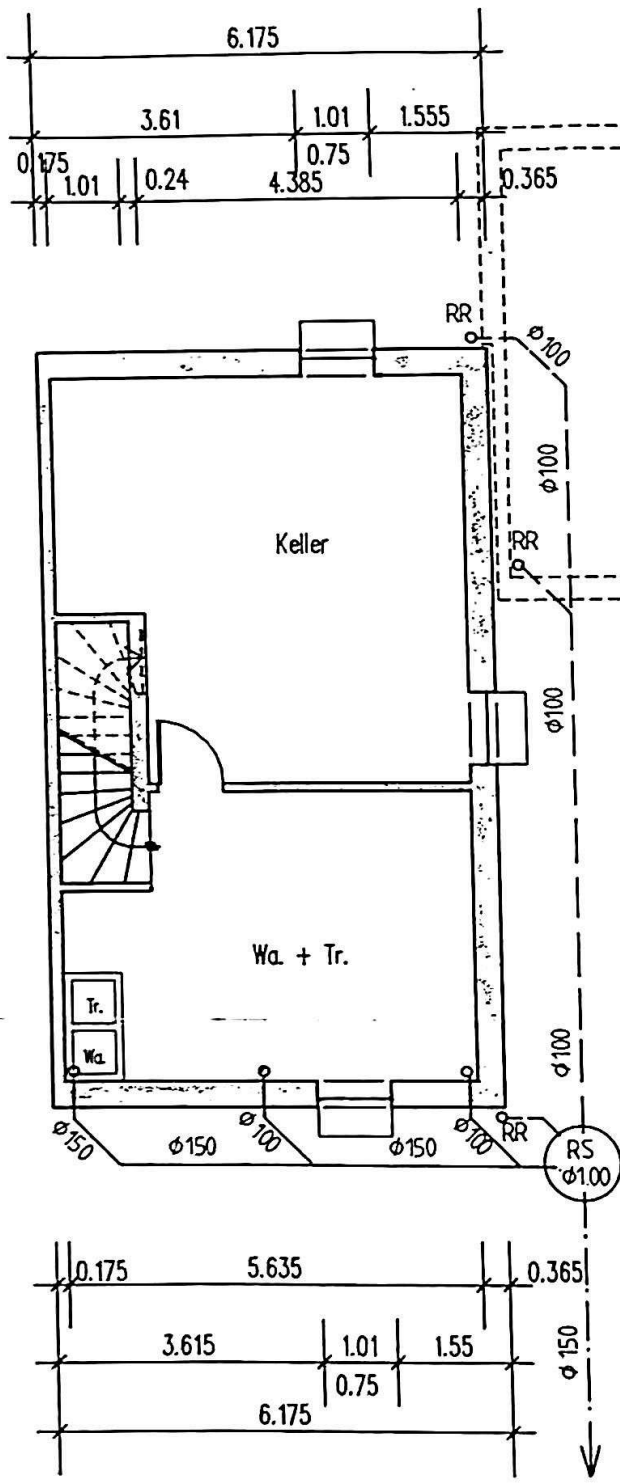


ohne Möbel

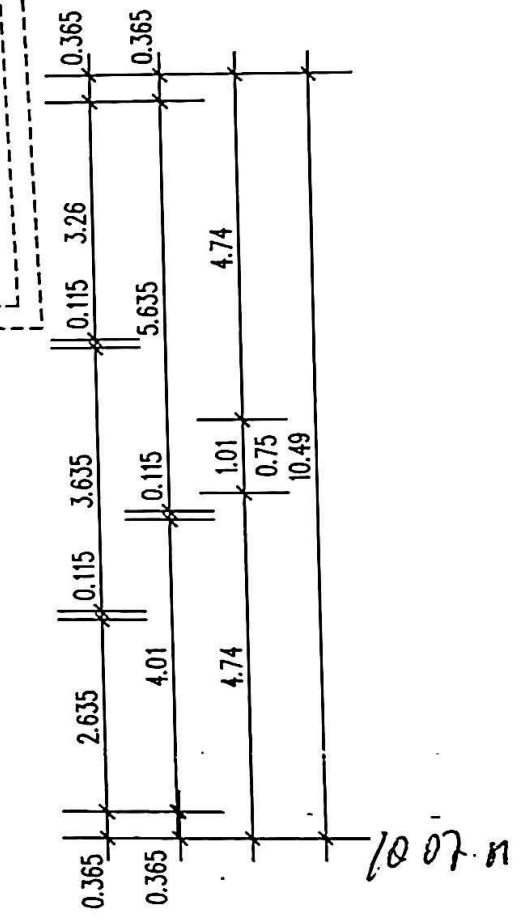


Obergeschoß

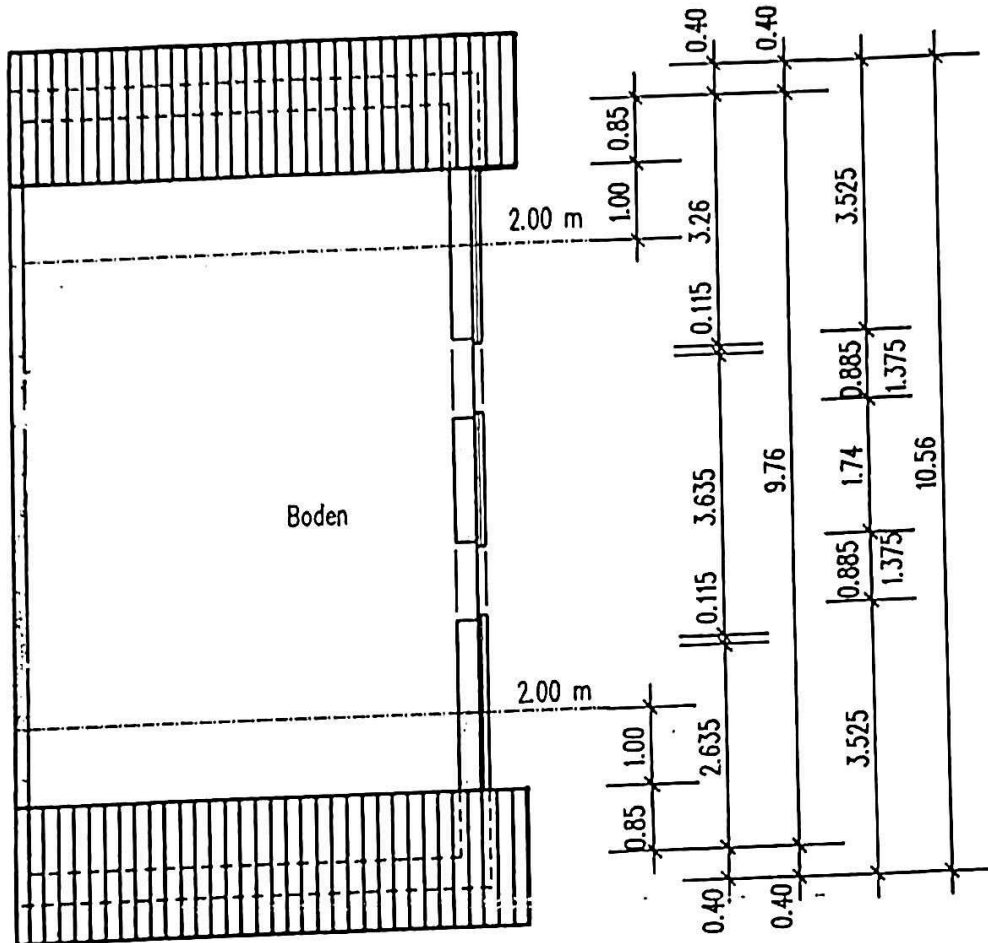
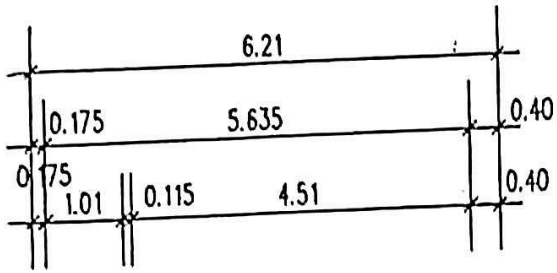
[Signature]
 G. Erwin
 Ch. Erwin
 12.07.0



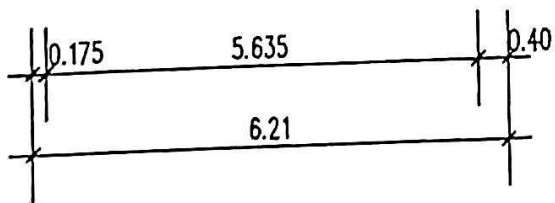
Kellergeschoß



Handwritten signature:
 G. Erwin
 Ch. Erwin
 für dot.



12.07.01



Dachgeschoß

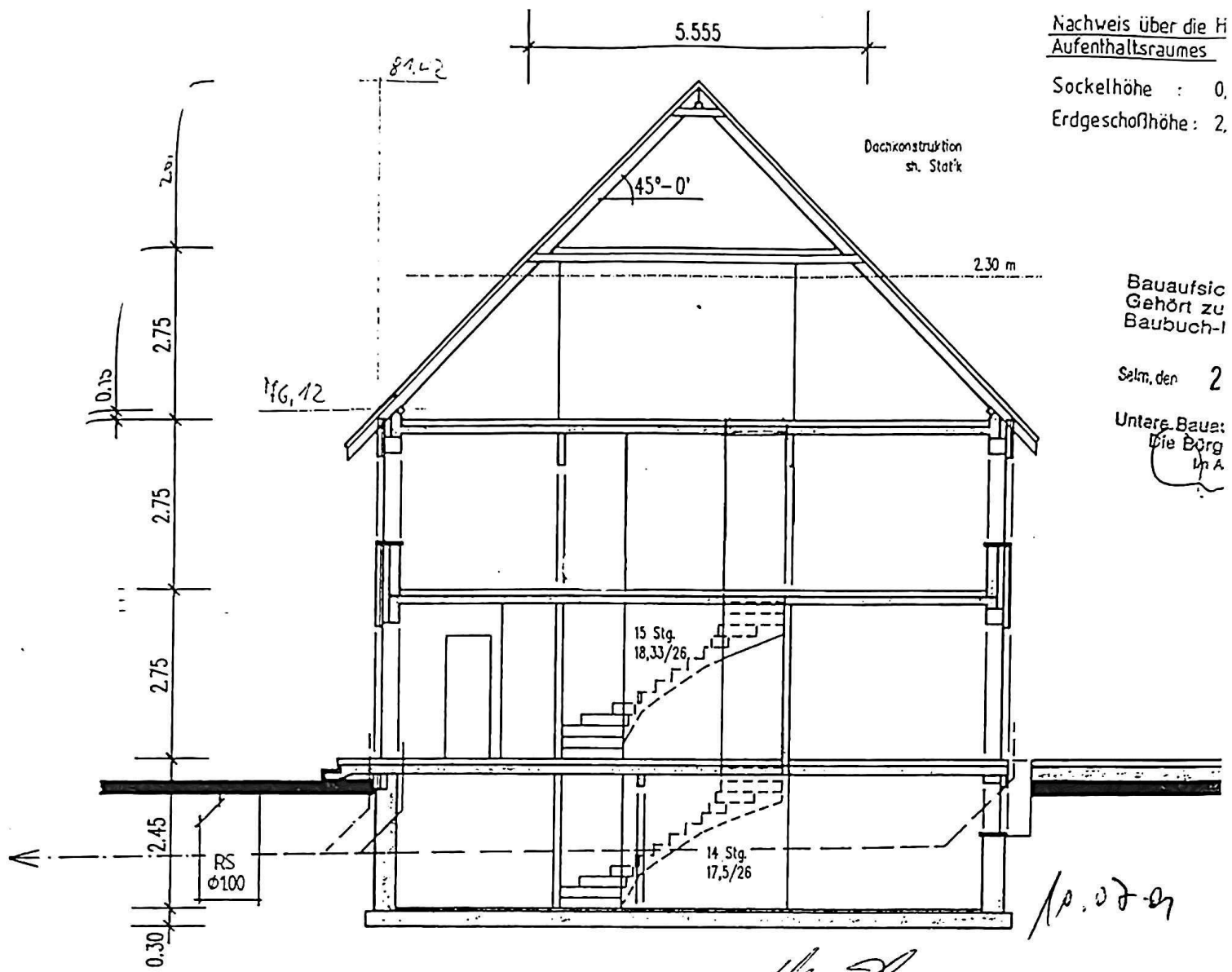
G. Erwin

Ch. Erwin

1/2. 2001

Nachweis über die H
Aufenthaltsraumes

Sockelhöhe : 0,
Erdgeschoßhöhe : 2,



Bauaufsicht
Gehört zu
Baubuch-I

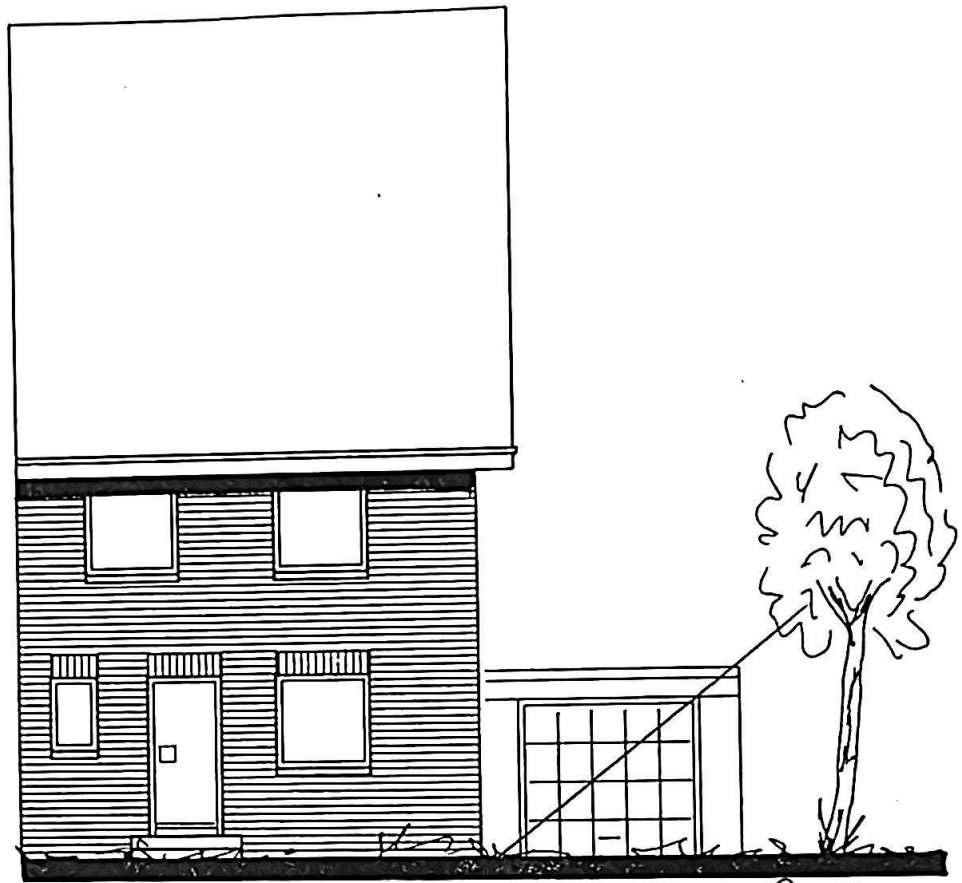
Selm, den 2

Untere Bau:
Die Börg
in A

Schnitt Whs.

Handwritten signature: Georg Erwin
Handwritten signature: Tho Erwin

OBJEKT	Errichtung einer Doppelhaushälfte mit Ge	
	in Selm, Synagogenweg 2 <i>Handwritten: 1/2 No. 2</i>	
BAUHERR	Fa. Optima Wohnungsbau GmbH	
	Hauptstr. 34, 59379 Selm - Bork	
BAUTEIL	Ansichten	
BAUHERR	ARCHITEKT	Gez. Un
<i>Handwritten signature</i> EINRICH BUSEMANN B.-U.-ING. LUDWIGSTR. 119 - 59379 SELM TELEFON 02592 117 95		M. 1
		Bl. Gr. 88
SELM, im Mai 2000		Bl. Nr. 3



mit ~~ohne~~ Garage ✓
" Bepflanzung

Ost Ansicht 10.07.07

M. Sp.

J. Carlisle

Ch. Erwin

St. 001



mit ~~ohne~~ Garage
~~ohne~~ Bepflanzung
10.07.01

West Ansicht

H. E.
G. Erwin
Ch. Erwin
10.07.01

