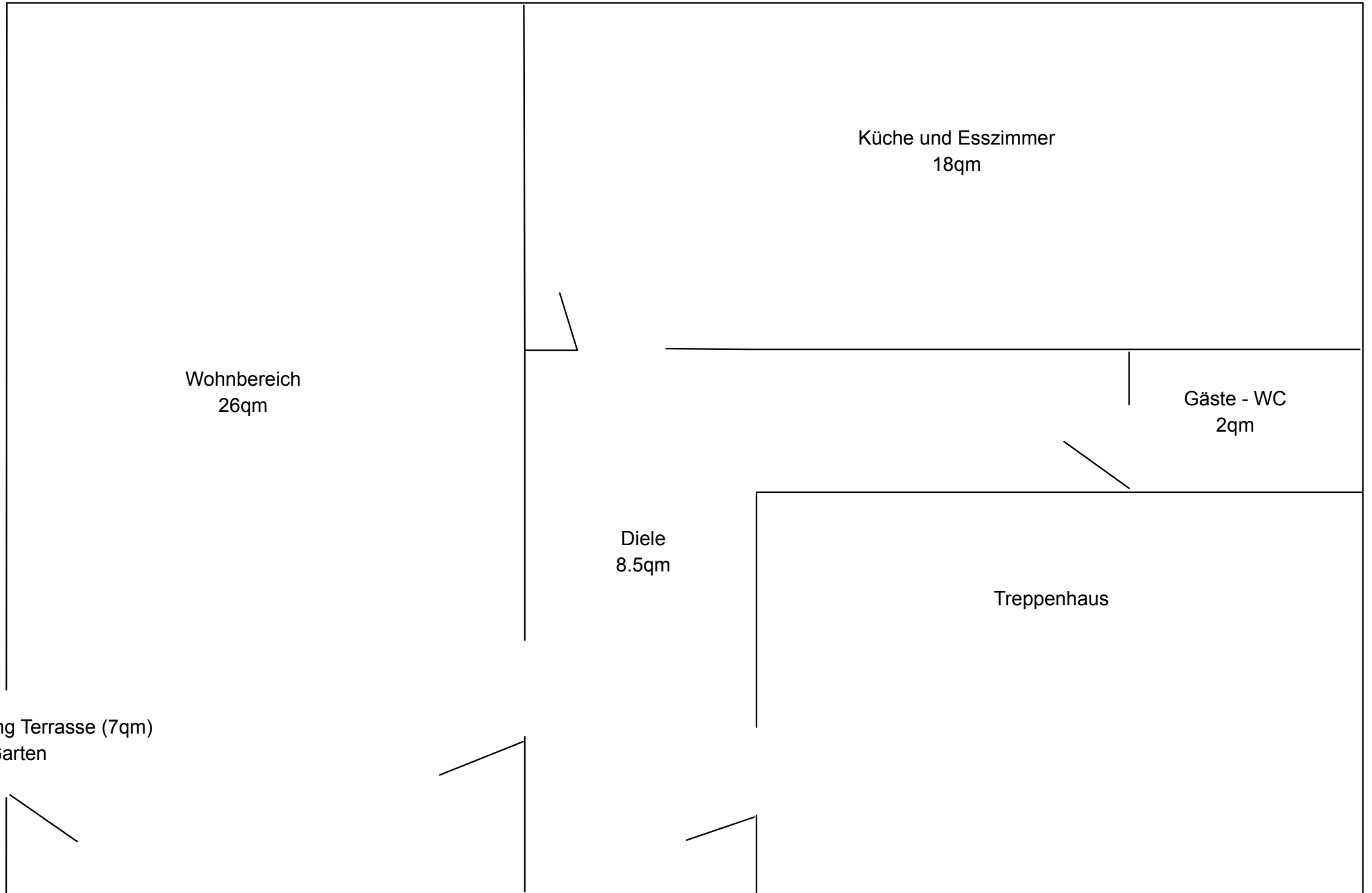
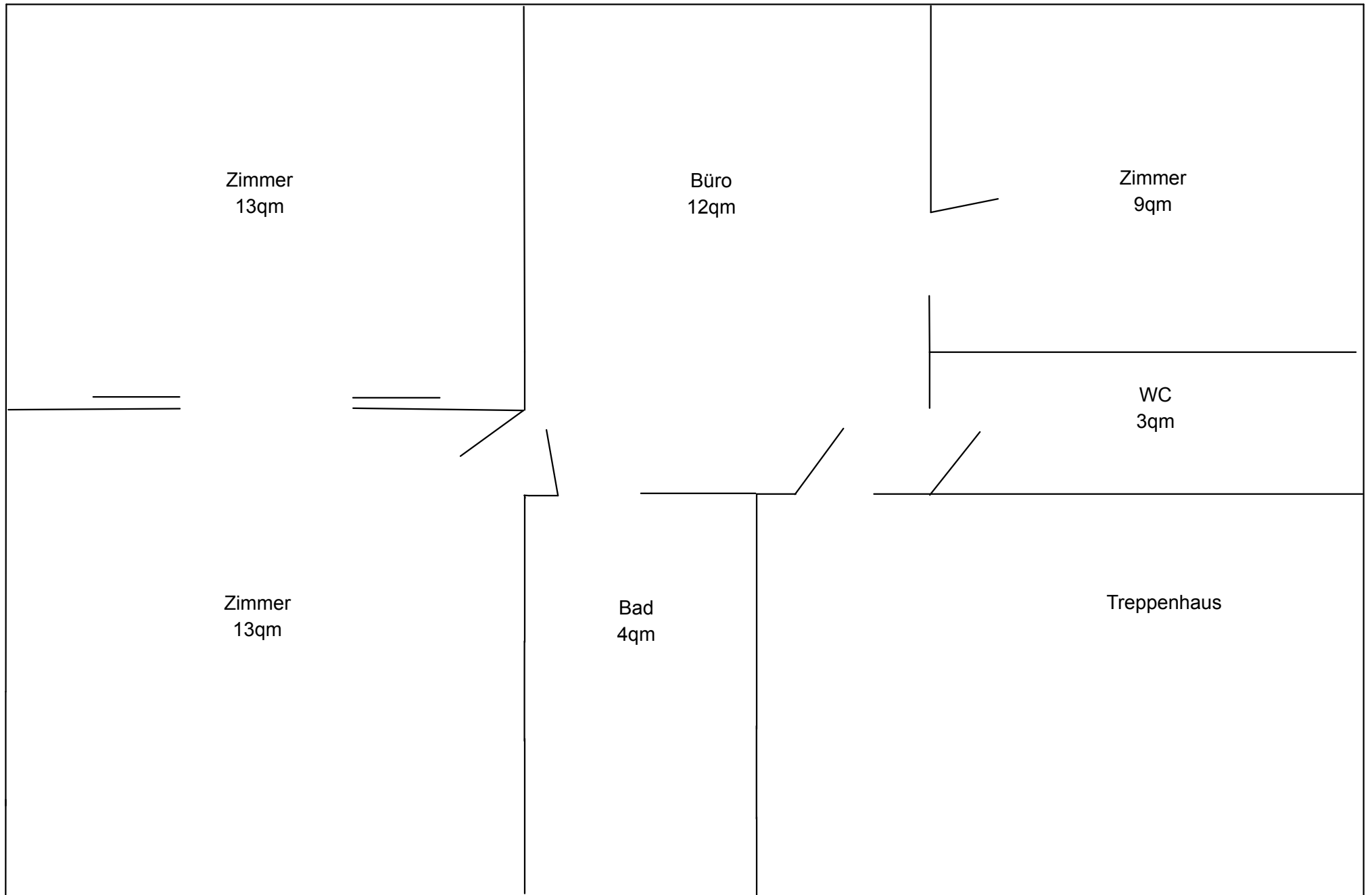


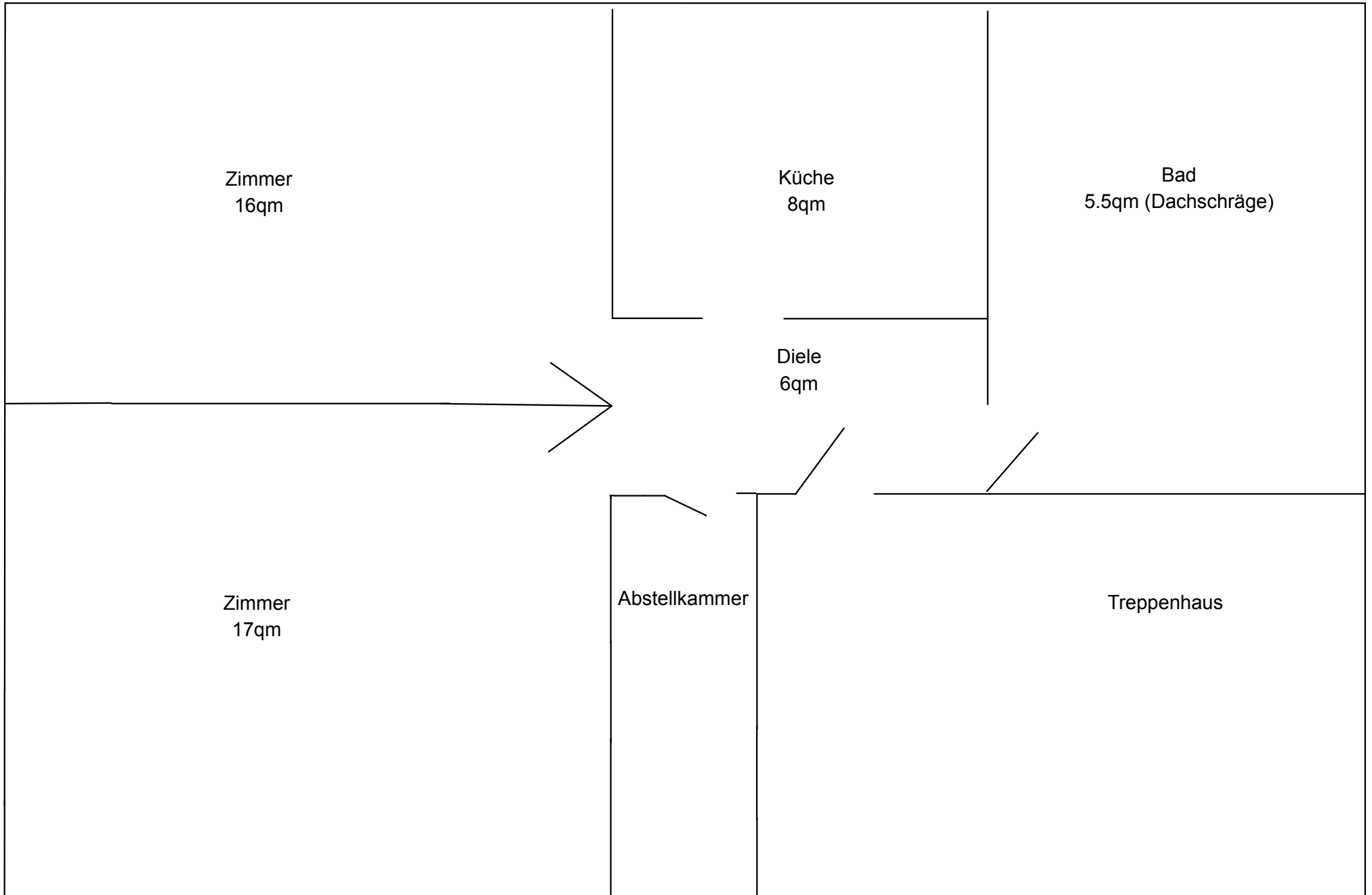
Erdgeschoss 62qm



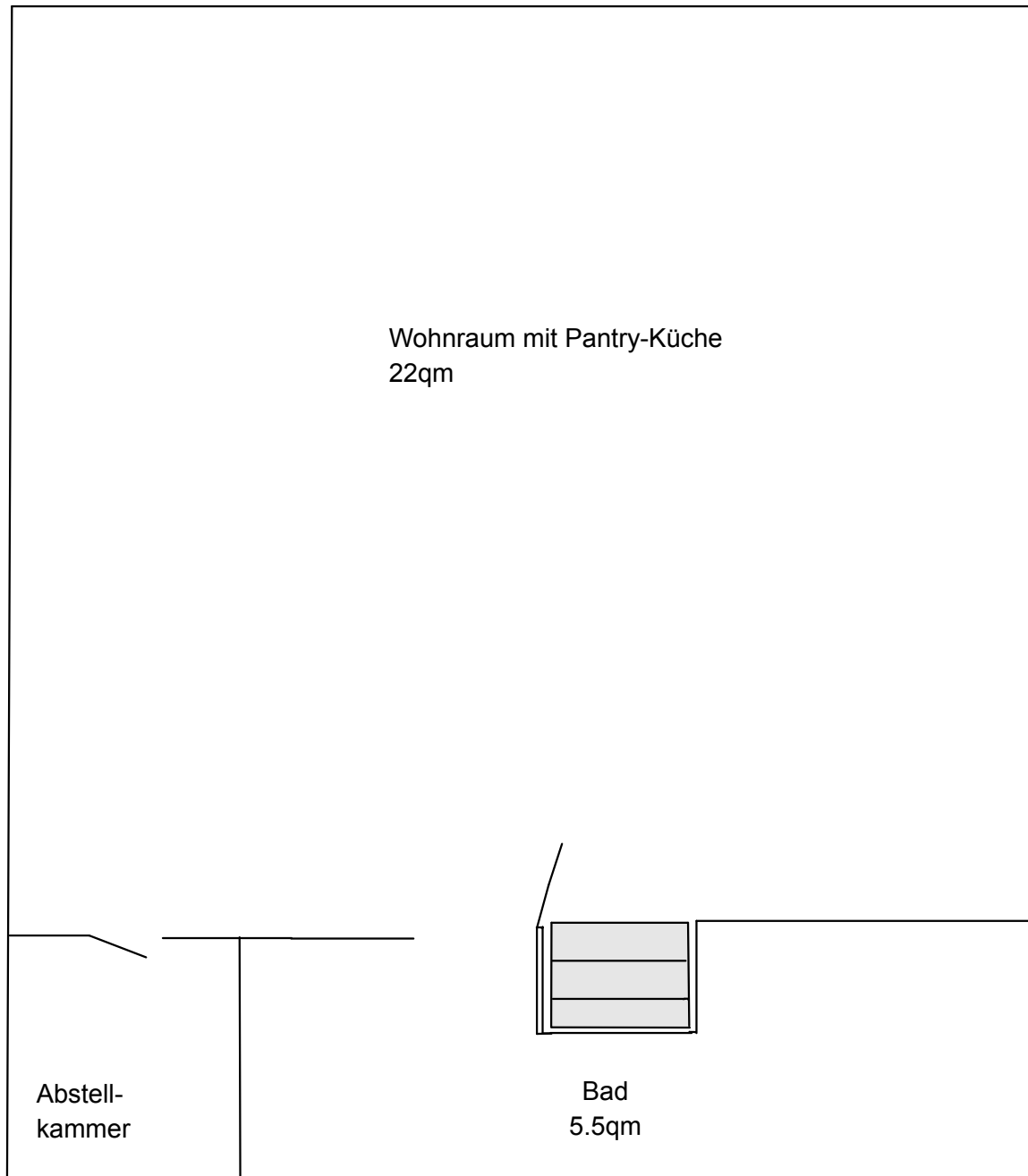
1-Stock
54.5qm



2-Stock
53qm



Dachgeschoss
24qm abzgl. Dachschräge

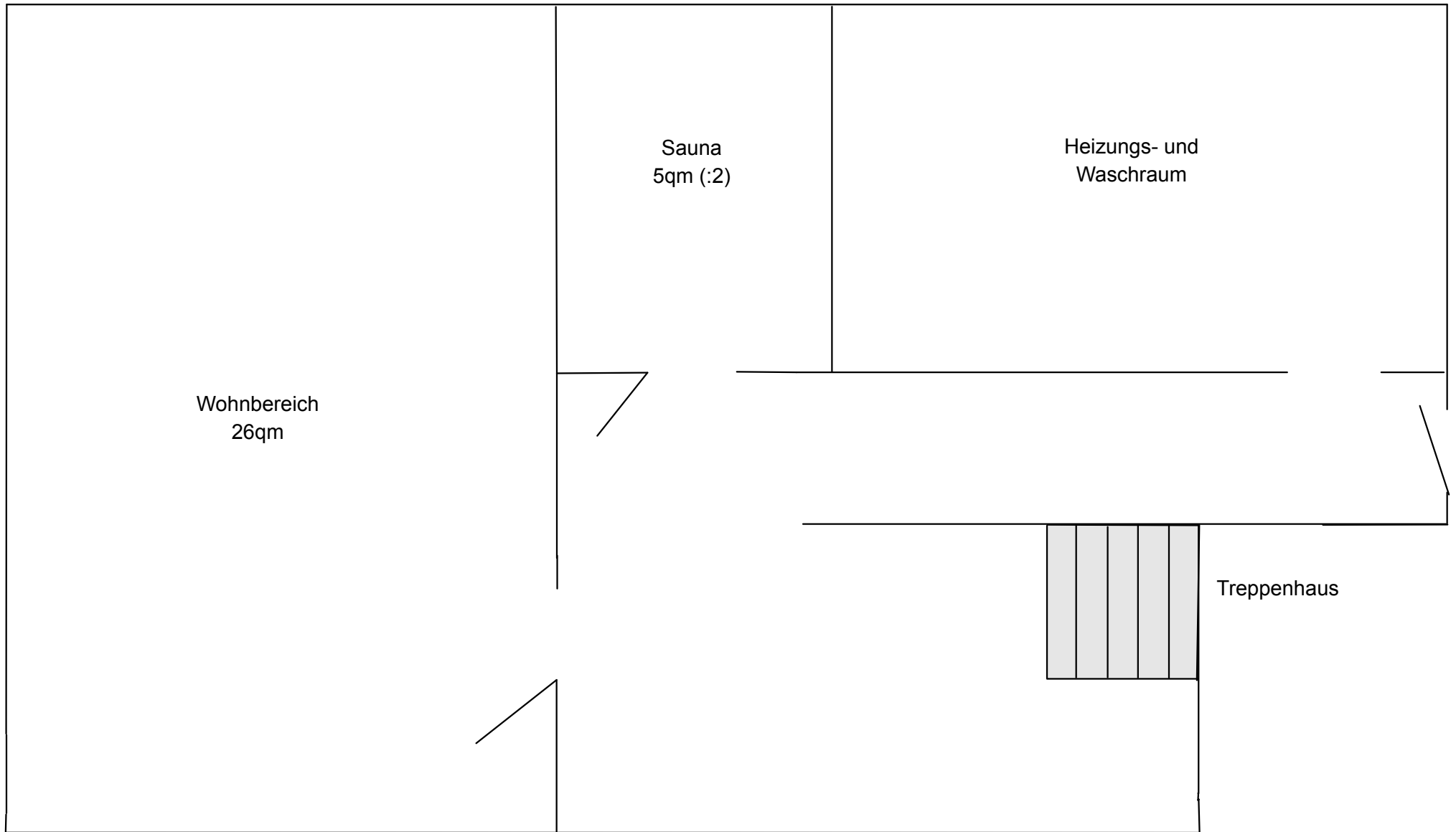


Wohnraum mit Pantry-Küche
22qm

Abstell-
kammer

Bad
5.5qm

**Keller
29qm**



Wohnbereich
26qm

Sauna
5qm (:2)

Heizungs- und
Waschraum

Treppenhaus